



4 2 2

## Lot 10102 Harpley Estate (Mid 2026) WERRIBEE VIC 3030

**Land Size: 392 m<sup>2</sup> House Size: 235 m<sup>2</sup>**

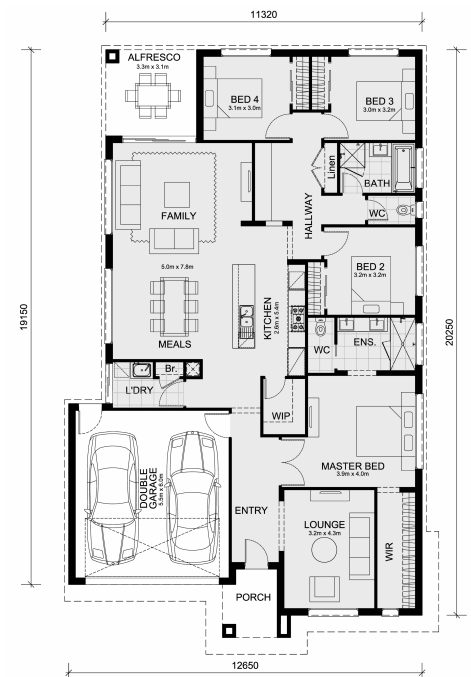
The Saba 250 House and Land Package!

\* Mimosa Homes New Added Value Inclusions:

- Inclusive of site costs & connections with H1 class slab as per standard inclusions!
- 50-year Structural Warranty!
- Quality floor coverings throughout entire home!
- Higher ceilings 2550mm to ground floor!
- Double Glazed Awning windows!
- LED Downlights to entire home!
- Vitrified Compact Surface benchtop to kitchen, bathroom & ensuite!
- 900mm S/S upright oven and cook top with S/S canopy rangehood!
- Stainless steel Dishwasher and Microwave
- Overhead cupboards to kitchen (Design specific)
- 2000mm High framed shower screen to ensuite & bathroom!
- 7 star energy!
- Flexible floor plans & so much more!

CALL BUILDER DIRECT!

All plans and facades are indicative only and may change. Mimosa Homes may amend plans, specifications, and prices without notice. Package prices are based on a standard facade, standard inclusions, and suitable land availability, excluding developer/estate requi...



SAVE \$\$\$ ON STAMP DUTY!!!

# \$715,006

**Chitraksh Bhargav**

E: [chitraksh@mimosahomes.com.au](mailto:chitraksh@mimosahomes.com.au)

P: 0424447033