



V Newham 196

 4
  2
  2

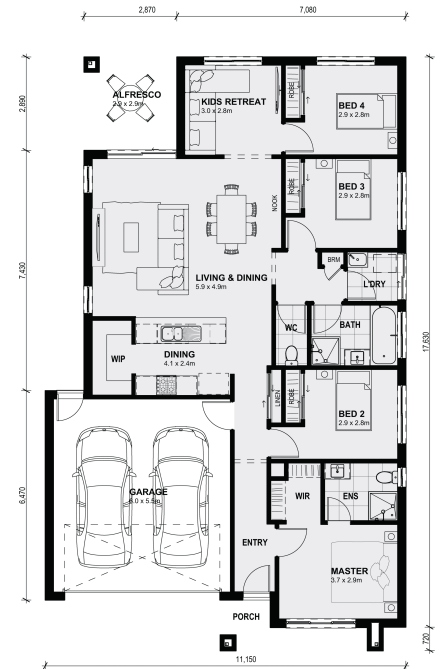
Lot 1019 Albert Drive (Maplewood Estate) MELTON VIC 3337

Land Size: 313 m² House Size: 183 m²

The perfect home With three bedrooms, a large master bedroom with walk-in wardrobe and ensuite and an extra living space, this modern home is perfect for retirees, couples, small families or investors. with all the wanted upgrades and inclusions!

Contact Azur PH: 0400 407 085, today for more info!!

All plans and facades are indicative concepts only and are not intended to be accurate depictions. Mimosa Homes reserves the right to amend plans specifications and price without notice. Package prices are based on a standard facade, standard inclusions, the availability of suitable land for development and does not include developer/estate requirements. Facade and inclusion images shown may not be standard and may not be included in the price of the home. All dimensions are approximate. Package prices do not include landscaping, fencing, decking, planter boxes, driveways and paths unless specified.



\$536,950

Azur Berberovic

E: azur@mimosahomes.com.au

P: 0400407085