



 4
  2
  2

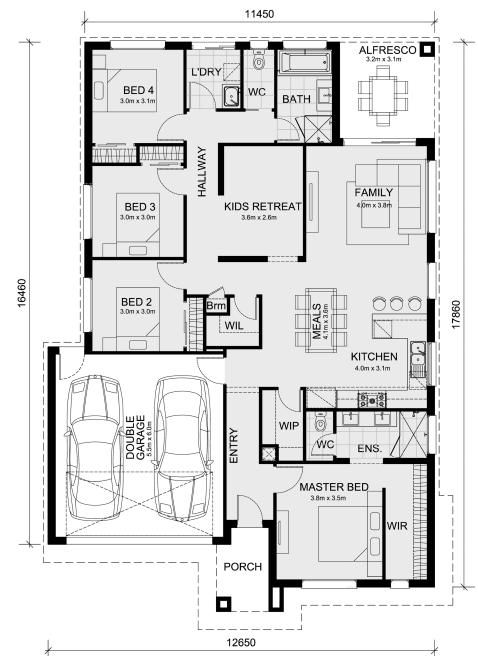
## Lot 1020 Platinum Way Fraser Rise 3336 VIC

**Land Size: 390 m<sup>2</sup> House Size: 208 m<sup>2</sup>**

Build your 4 bedroom Archie 226 on this 390m<sup>2</sup> nw-facing block in Westwood Place, Fraser Rise — expected title Q1 2027. Upgrade to a brand new family home. Stamp duty on land only.

Mimosa Homes Added Value Inclusions valued at \$48,778 — call/text for full list:  
 Site costs & connections included with H1 class slab  
 50 Year Structural Warranty!  
 Quality floor coverings throughout entire home!  
 Higher ceilings 2550mm to ground floor!  
 Double Glazed Awning windows!  
 LED Downlights to entire home!  
 Vitrified benchtops to kitchen, bath & ensuite!  
 900mm S/S dual fuel cooker & canopy rangehood  
 7 star energy!  
 Why Westwood Place, Fraser Rise:

Watergardens Station | 36 min to CBD  
 Wiyal Primary School now open nearby  
 Caroline Springs & Taylors Hill shops close  
 All plans and facades are indicative only and may change. Mimosa Homes may amend plans, specifications, and prices without notice. Package prices are based on a standard facade, standard inclusions, and suitable land availability, excluding developer/est...



**\$714,250**

**Hussain Sabir**

E: [hussain@mimosahomes.com.au](mailto:hussain@mimosahomes.com.au)