



 4
  2
  2

IOT 1026 Coollegrean Rd Wollert 3750 VIC

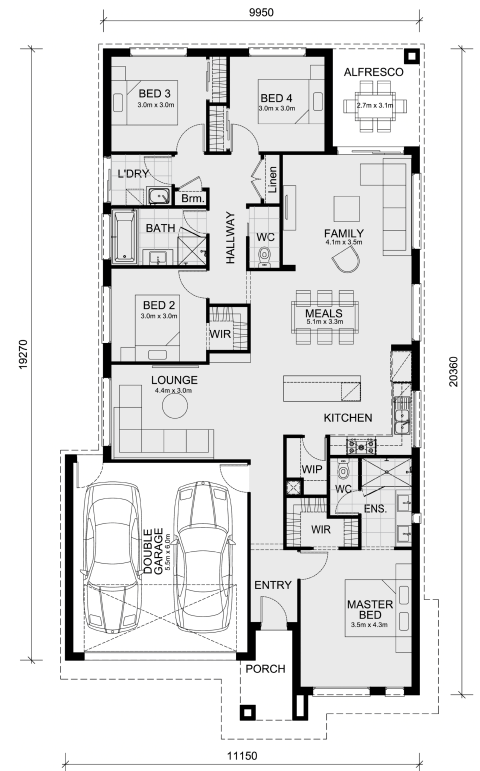
Land Size: 400 m² House Size: 207.3 m²

? Plan Ahead — Build Your Dream Home with Mimosa Homes!
Leemore 221 on a 400 sqm block in the Heart of Wollert

An unbeatable opportunity for first home buyers, investors, or families looking for quality, value, and style.

? Premium Inclusions You'll Love

- ? 50-Year Structural Warranty – Confidence built into every brick.
- ? Fixed Site Costs – Including BAL 12.5, so there are no surprises.
- ? Stylish Flooring Throughout – Timber-look laminate, carpet & tiles.
- ? 2,550mm High Ceilings – Enjoy a spacious, open feel.
- ? Stone Benchtops – Kitchen, ensuite & bathroom.
- ? 900mm Appliances – Oven, cooktop & rangehood.
- ? Microwave with Trim Kit + Dishwasher Included
- ? Semi-floating Vanities + Tiled Shower Bases
- ? LED Downlights Throughout + External Lighting
- ? Internal Garage Access + 2 Remotes
- ? Flyscreens to Windows + Obscure Glazing to Wet Areas
- ? 7-Star Energy Rating – Efficient heating & hot water.
- ? Concrete Alfresco Floor + 3-Coat Wall Pain...



\$720,910

Rajeev Sethi

E: rajeev@mimosahomes.com.au

P: 0414 536 048