



4 2 2

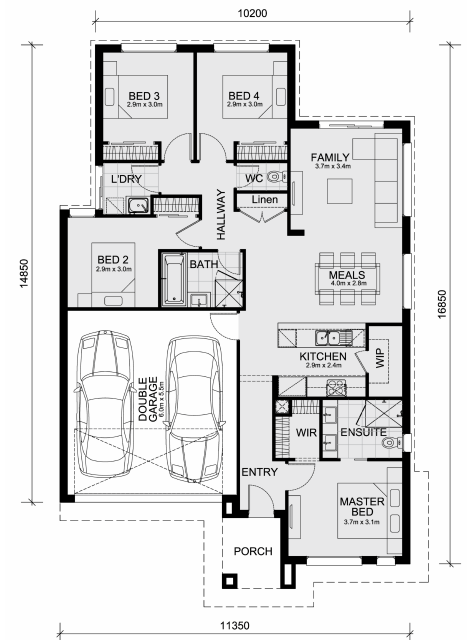
Lot 105 Society 1056 Estate (Titled Land) FRASER RISE VIC 3336

Land Size: 263 m² House Size: 167 m²

The Montrose 182 House and Land Package!

* Mimosa Homes New Added Value Inclusions:

- Inclusive of site costs & connections with H1 class slab as per standard inclusions!
- Quality floor coverings throughout entire home!
- Higher ceilings 2550mm to ground floor!
- Double Glazed Awning windows!
- LED Downlights to entire home!
- Fibre Optic Provision!
- Vitrified Compact Surface benchtop to kitchen, bathroom & ensuite!
- 600mm S/S upright oven and cook top with S/S canopy rangehood!
- Stainless steel Dishwasher and Microwave with trim kit!
- Overhead cupboards to kitchen (Design specific)
- Quick slider doors to robes!
- 2000mm High framed shower screen to ensuite & bathroom!
- 800mm wide laminate double door cabinet to laundry!
- Semi-floating vanity cabinet to ensuite, bathroom & WC (Design specific)
- Remote control panel sectional lift garage door!
- Fibreglass mesh flyscreens to all openable windows!
- 7 star energy with solar hot water!
- Flexible floor plans &...



599,996

Chitraksh Bhargav

E: chitraksh@mimosahomes.com.au

P: 0424447033