



4 2 2

## LOT 1111 Rainbow Street (Wollert Rise Estate) WOLLERT VIC 3750

**Land Size: 451 m<sup>2</sup> House Size: 265 m<sup>2</sup>**

The Lexton 287 House and Land Package!

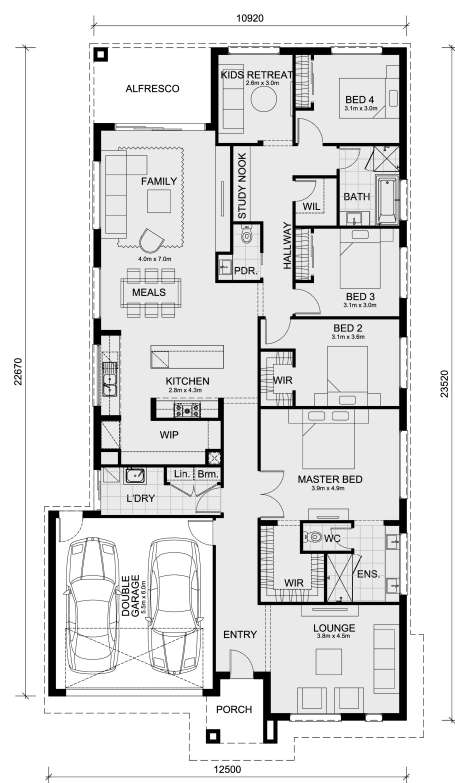
\* Titles in November 2025!

\* Mimosa Homes New Added Value Inclusions:

- Inclusive of site costs & connections with H1 class slab as per standard inclusions!
- 50-year Structural Warranty!
- Quality floor coverings throughout entire home!
- Higher ceilings 2550mm to ground floor!
- Double Glazed Awning windows!
- LED Downlights to entire home!
- Vitrified Compact Surface benchtop to kitchen, bathroom & ensuite!
- 900mm S/S upright oven and cook top with S/S canopy rangehood!
- Stainless steel Dishwasher and Microwave
- Overhead cupboards to kitchen (Design specific)
- 2000mm High framed shower screen to ensuite & bathroom!
- 7 star energy!
- Flexible floor plans & so much more!

CALL BUILDER DIRECT! 0411 403 640

All plans and facades are indicative only and may change. Mimosa Homes may amend plans, specifications, and prices without notice. Package prices are based on a standard facade, standard inclusions, and suitable land avail...



**\$790,496**

**Senada Klempic**

E: [senada@mimosahomes.com.au](mailto:senada@mimosahomes.com.au)

P: 0411403640