



## Lot 1113 Rainbow Street WOLLERT VIC 3750

**Land Size: 441 m<sup>2</sup> House Size: 235 m<sup>2</sup>**

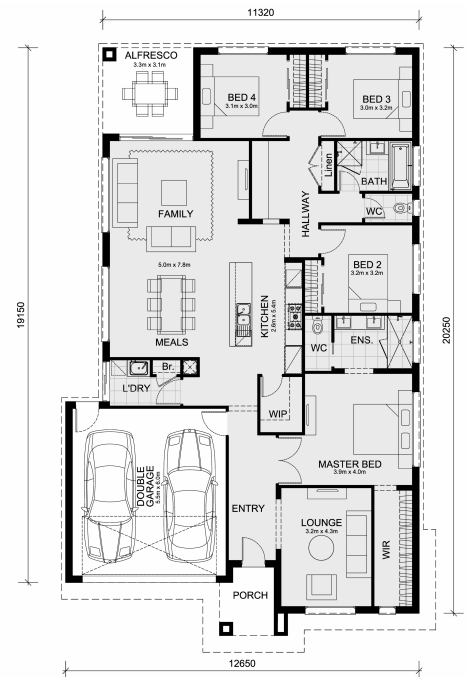
The Saba 250 House and Land Package!

\* Mimosa Homes New Added Value Inclusions:

- Inclusive of site costs & connections with H1 class slab as per standard inclusions!
- 50-year Structural Warranty!
- Quality floor coverings throughout entire home!
- Higher ceilings 2550mm to ground floor!
- Double Glazed Awning windows!
- LED Downlights to entire home!
- Vitrified Compact Surface benchtop to kitchen, bathroom & ensuite!
- 900mm S/S upright oven and cook top with S/S canopy rangehood!
- Stainless steel Dishwasher and Microwave
- Overhead cupboards to kitchen (Design specific)
- 2000mm High framed shower screen to ensuite & bathroom!
- 7 star energy rating!
- Flexible floor plans & so much more!

CALL BUILDER DIRECT! NAP MADRIAGA 0427631471

All plans and facades are indicative only and may change. Mimosa Homes may amend plans, specifications, and prices without notice. Package prices are based on a standard facade, standard inclusions, and suitable land availability, e...



**SAVE \$\$\$ ON STAMP DUTY!!!**

# \$752,229

**Nap Madriaga**

E: [nap@mimosahomes.com.au](mailto:nap@mimosahomes.com.au)

P: 0427631471