



4 2 2

## Lot 12 #13 Yardi Way - Saffron Estate CLYDE NORTH VIC 3978

**Land Size: 313 m<sup>2</sup> House Size: 183 m<sup>2</sup>**

With three kids bedrooms, a large master bedroom with walk-in wardrobe and ensuite, this modern home is perfect for retirees, couples, small families or investors. Just the basics but?

Unheard of in this size of block & budget includes 4 Beds PLUS 2nd living area;

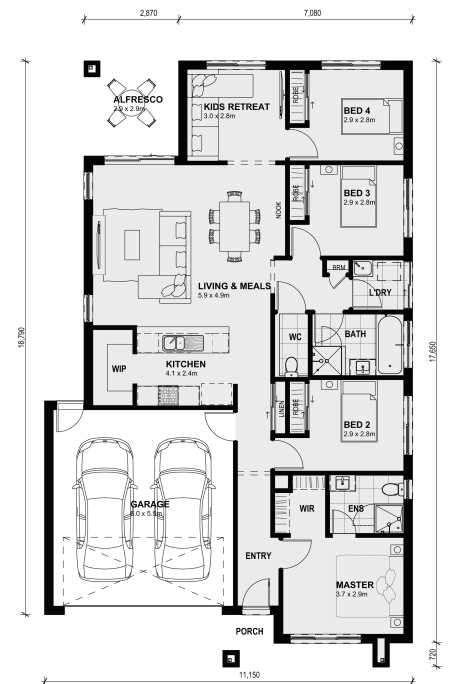
\* Call it Rumpus?

\* Call it Theater?

\* WIP and excellent sized kitchen

Full Turn Key package (Front & Rear Landscape, Driveway, Blinds, Split System AC, Downlight Pkg & Kitchen stone bench)

\* Available from \$659,830



# \$639,990

**Chris Prystupa**

E: [chris@mimosahomes.com.au](mailto:chris@mimosahomes.com.au)

P: 0435081699