



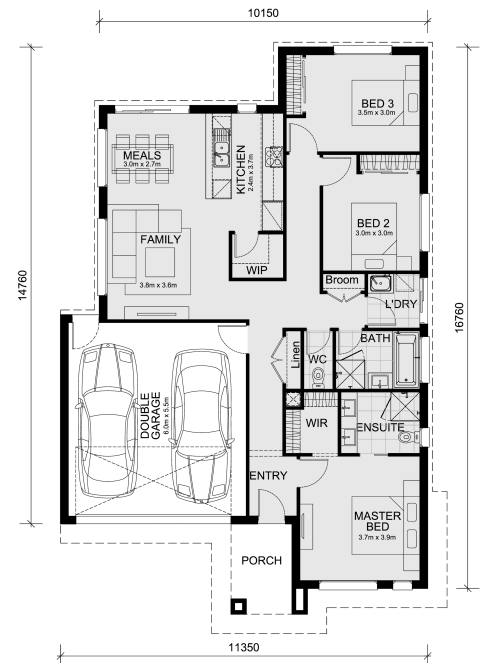
3 2 2

# Lot 122 Twilight Crescent - Tommys Run Pakenham 3810 VIC

**Land Size: 350 m<sup>2</sup> House Size: 161.6 m<sup>2</sup>**

To inquire, contact Adam at 0439 779 909.

The Jamieson 176 and a 350 sqm lot northwest are located in Tommys Run.  
 Confidence: 50-Year Mimosa Homes Structural Warranty Fixed site costs Timber-look laminate, carpet, and floor tiles High ceilings 2550mm Stone benchtops—Kitchen, Ensuite & Bathroom 900mm Oven, Induction cooktop & Rangehood (600mm for homes under 20 sq) Microwave with trim kit & dishwasher Semi-floating vanities (double to ensuite) & tiled shower bases Quick-slide robe doors LED downlights throughout, external lights & garage strip light Internal garage access with 2 garage door remotes Flyscreens on windows & obscure-glazing in the ensuite & bathroom 7-Star Energy Rating: Split-system heating/cooling and heat pump hot water unit Concrete slab floor to alfresco, where applicable 3-coat paint system on the walls 2 TV points, 2 phone/data points. Towel & toilet roll holders included Termite Management System—Part A (slab), Part B (external) Occupational Health & Safety compliance, includin...



**\$712,390**

**Adam Keleher**  
 E: adamk@mimosahomes.com.au  
 P: 0439 779 909