



4 2 2

## LOT 1223 Deanside Village DEANSIDE VIC 3336

**Land Size: 357 m<sup>2</sup> House Size: 222 m<sup>2</sup>**

Prepare to be captivated by the Epsom's spacious and intuitively designed interior, providing a harmonious and effortless home.

Dedicated to rest and relaxation the Epsom features four bedrooms all located on the first floor and is accompanied by a retreat and shared bathroom. On the ground floor, the highlight is the large open kitchen, meals and dining area that also has a large walk-in wardrobe, powder room, walk-in linen and a separate front lounge as the perfect sanctuary.

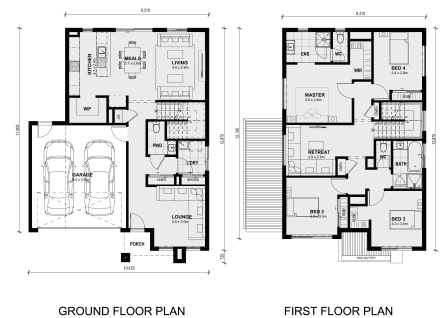
This 7 Star Energy Home includes:

- Site Cost
- Solar Panels
- Double Glazed Windows
- 900mm Kitchen Appliances
- Fibre Optic Provision
- LED Downlights to Entire Home
- Stone benchtop to Kitchen & Bathrooms
- Higher Ceilings
- Flyscreens to All Openable Windows
- Express contract & Much more!

Contact Senada Klempic directly to secure this package!

0411 403 640

...



GROUND FLOOR PLAN

FIRST FLOOR PLAN

# \$759,335

**Senada Klempic**

E: [senada@mimosahomes.com.au](mailto:senada@mimosahomes.com.au)

P: 0411403640