



4 2 2

LOT 125 KAILASH PLACE (MONTVIEW ESTATE) Craigieburn

3064 VIC
Land Size: 350 m² House Size: 207.3 m²

The Leemore 221 House and Land Package!

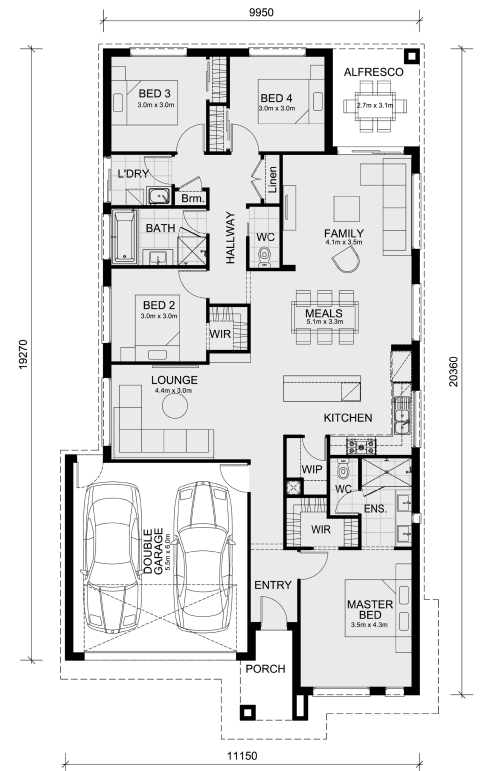
Anticipated Title Q3 2026 !

* Mimosa Homes New Added Value Inclusions:

- 50 Year Structural Warranty!
- Inclusive of site costs & connections with H1 class slab as per standard inclusions!
- Quality floor coverings throughout entire home!
- Higher ceilings 2550mm to ground floor!
- Double Glazed Awning windows!
- LED Downlights to entire home!
- Fibre Optic Provision!
- Vitrified Compact Surface benchtop to kitchen, bathroom & ensuite!
- 900mm S/S upright oven and cook top with S/S canopy rangehood!
- Stainless steel Dishwasher and Microwave with trim kit!
- 7 star energy!
- Flexible floor plans & so much more!

CALL Rajeev Sethi - 0414536048!

All plans and facades are indicative only and may change. Mimosa Homes may amend plans, specifications, and prices without notice. Package prices are based on a standard facade, standard inclusions, and suitable land availability, excluding developer/estate requirements. Facade and inclusion images may sh...



\$772,910

Rajeev Sethi

E: rajeev@mimosahomes.com.au

P: 0414 536 048