



4 2 2

LOT 1307 (CNR) Sunny Street (Kingsfield Estate) SUNBURY VIC 3429

Land Size: 444 m² House Size: 235 m²

The Mornington 250 House and Land Package!

* TITLED LAND

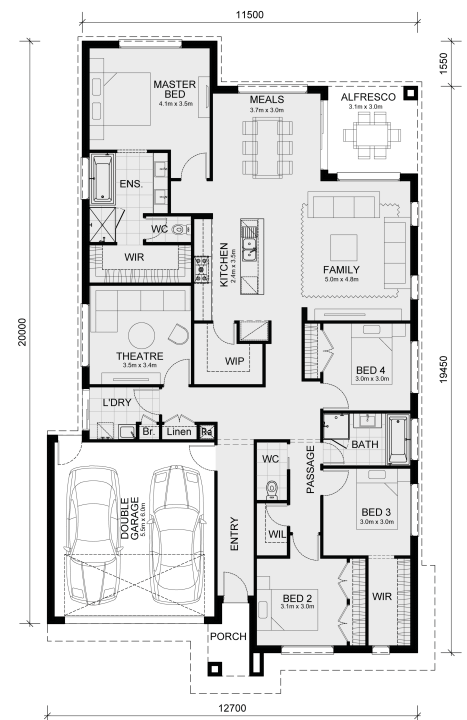
* NCC Compliant Floorplan

* Mimosa Homes Added Value Inclusions:

- Inclusive of site costs & connections with H1 class slab as per standard inclusions!
- Quality floor coverings throughout entire home!
- Higher ceilings 2550mm to ground floor!
- Double Glazed Awning windows
- Downlights to living areas!
- Vitrified Compact Surface benchtop to kitchen!
- 900mm S/S upright oven and cook top with S/S canopy rangehood!
- Stainless steel Dishwasher and Microwave with trim kit!
- Overhead cupboards & wine rack! (Design specific)
- Remote control panel sectional lift garage door!
- 7 star energy with solar hot water!
- Flexible floor plans & so much more!

CALL SENADA KLEMPIC DIRECTLY!

All plans and facades are indicative concepts only and are not intended to be accurate depictions. Mimosa Homes reserves the right to amend plans specifications and price without notice. Package prices are based on a standard facade, stan...



\$670,101

Senada Klempic

E: senada@mimosahomes.com.au

P: 0411403640