



5 3 2

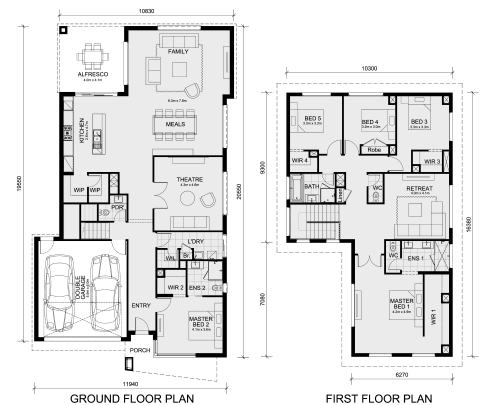
lot 1347 Gator Esplande CLYDE NORTH VIC 3978

Land Size: **House Size:368 m²**

The Balmoral 396 House and Land Package!
Cleverly designed to be larger than life

Featuring a generous open plan family & meals, large open kitchen with a butlers pantry, theatre room and a separate guest suite with its own bathroom and robe on the ground floor, while still allowing for 3 bedrooms, retreat and a generous master suite on the first floor. With its clever layout and accommodating design, the Balmoral perfectly caters for a large family all while offering a touch of luxury for everyday living.

...



\$1,084,510

John Lynch

E: johnl@mimosahomes.com.au

P: 0455825096