



## Leemore 221

4 bedrooms 2 bathrooms 2 car spaces

### LOT 1402 RIVELLA DRIVE - BERWICK WATERS - CLYDE NORTH VIC 3978

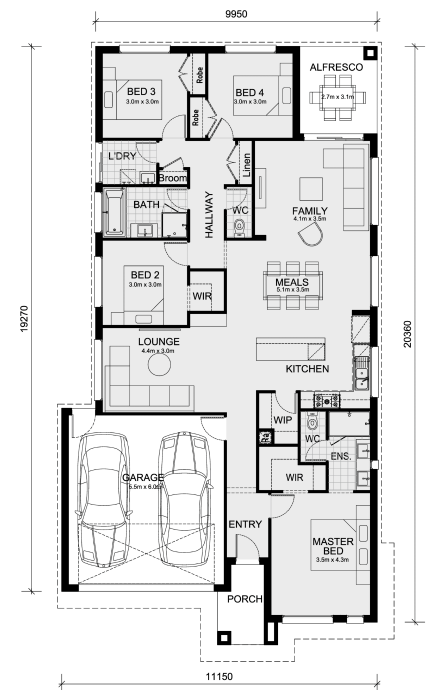
Land Size: 350 m<sup>2</sup> House Size: 205 m<sup>2</sup>

The Leemore 221 House and Land Package!

- Inclusive of site costs & connections with H1 class slab as per standard inclusions!
- Range of facades including feature render!
- Quality floor coverings throughout entire home!
- Higher ceilings 2550mm to ground floor!
- Downlights to living areas!
- Stone bench top to kitchen!
- 900mm S/S upright oven and cook top with S/S canopy rangehood!
- Stainless steel Dishwasher and Microwave with trim kit!
- Overhead cupboards & wine rack! (Design specific)
- Remote control panel sectional lift garage door!
- 6 star energy with solar hot water!
- Flexible floor plans & so much more!

CALL BUILDER DIRECT!

All plans and facades are indicative concepts only and are not intended to be accurate depictions. Mimosa Homes reserves the right to amend plans specifications and price without notice. Package prices are based on a standard facade, standard inclusions, the availability of suitable land for development and does not include developer/estate requirements. Facade and inclusion images shown may not be standard and may not be included in the price of the home. All dimensions are approximate. Package prices do not include landscaping, fencing, decking, planter boxes, driveways and paths unless specified.



BRAND NEW DESIGN HOT OFF THE PRESS!

# \$752,200

**Dean Pattison**

E: [dean@mimosahomes.com.au](mailto:dean@mimosahomes.com.au)

P: 0419575711