



4  2  2 

## LOT 148 Montana Estate Kilmore 3764 VIC

**Land Size: 612 m<sup>2</sup> House Size: 265.7 m<sup>2</sup>**

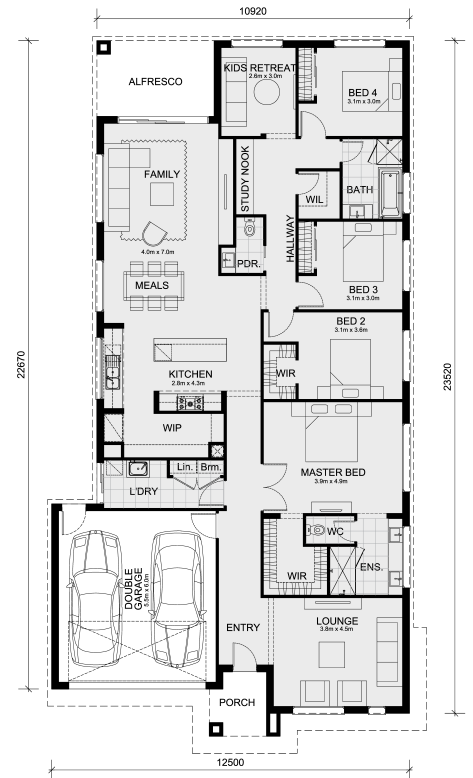
The Lexton 287 House and Land Package!

Land Titles Anticipated in Q3 2025

- Fixed Site Cost - INCLUDED
- 50-year Structural Warranty- INCLUDED
- Quality Floor Covering - INCLUDED
- 2.55m Ceiling Height - INCLUDED
- Ducted Heating & Evaporative Cooling - INCLUDED
- Double Glazing Windows - INCLUDED
- 3.5kW Solar Panels - INCLUDED
- Undermount Sink to Kitchen - INCLUDED
- 40mm Benchtop to Kitchen - INCLUDED
- 20mm Benchtops to Ensuite & Bathroom - INCLUDED
- LED Downlights to Entire Home - INCLUDED
- Dishwasher & Trim Kit Microwave- INCLUDED
- Flyscreens to all Openable Windows - INCLUDED
- Fibre Optic NBN Provision - INCLUDED
- AND MORE

CALL BUILDER DIRECT!

All plans and facades are indicative only and may change. Mimosa Homes may amend plans, specifications, and prices without notice. Package prices are based on a standard facade, standard inclusions, and suitable land availability, excluding developer/estate requirements. Facade and inclusion images may show non standa...



# \$659,976

**Digant Vania**

E: [digant@mimosahomes.com.au](mailto:digant@mimosahomes.com.au)