



Beechworth 328

4 bedrooms, 2 bathrooms, 2 car spaces

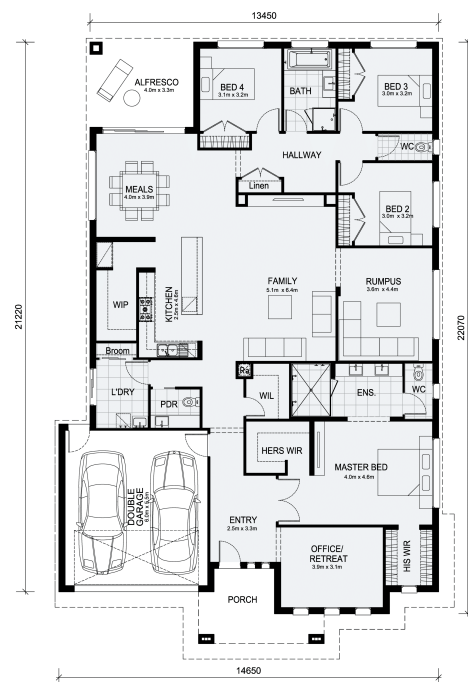
Lot 15713 Wedouree Crescent MANOR LAKES VIC 3024

Land Size: 512 m² House Size: 305 m²

The expansive open kitchen, along with its impressive walk-in pantry, seamlessly connects to the dining and living areas, which, in turn, open up to the inviting alfresco space. This harmonious layout creates a generous shared area that's perfect for entertaining. With four bedrooms, a private master suite boasting a spacious en-suite with a large shower and "his and hers" walk-in robes, a dedicated retreat or home office, and a convenient walk-in linen closet, this home is perfectly tailored for everyday family living.

Platinum Promotion - Elegance Pack

- *Up to 100% off fixed site costs*
- *Low profile roof tiles
- *Low profile evaporative cooling unit
- *Fibre optic provision
- *Brick infills to side and rear of home
- *LED downlights to entire home
- *40mm stone benchtop to kitchen
- *20mm stone benchtop to bathroom & ensuite
- *Tiled shower base to bathroom & ensuite
- *600mm single towel rails or rings & toilet roll holders
- *800mm wide laminate double door cabinet with 32mm laminate...



\$825,001

Jay Yu

E: jay@mimosahomes.com.au

P: 0414416828