



Saba 287

4 2 2

LOT 1632 WILLOW ESTATE GISBORNE VIC 3437

Land Size: 504 m² House Size: 269 m²

CONTACT BUILDER DIRECT! MAULIK 0430 884 855

The Saba 287 House and Land Package!

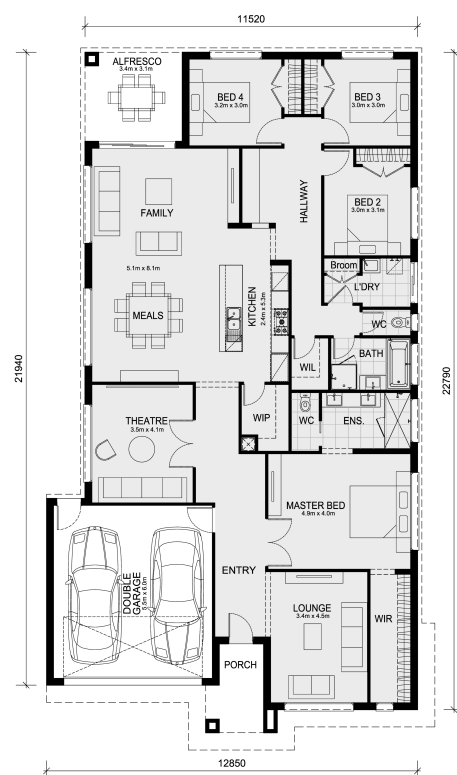
* NCC Compliant Floorplan

* Mimosa Homes Added Value Inclusions:

- Inclusive of site costs & connections with H1 class slab as per standard inclusions!
- Quality floor coverings throughout entire home!
- Higher ceilings 2550mm to ground floor!
- Double Glazed Awning windows
- Downlights to living areas!
- Vitrified Compact Surface benchtop to kitchen!
- 900mm S/S upright oven and cook top with S/S canopy rangehood!
- Stainless steel Dishwasher and Microwave with trim kit!
- Overhead cupboards & wine rack! (Design specific)
- Remote control panel sectional lift garage door!
- 7 star energy with solar hot water!
- Flexible floor plans & so much more!

CONTACT BUILDER DIRECT! MAULIK 0430 884 855

All plans and facades are indicative concepts only and are not intended to be accurate depictions. Mimosa Homes reserves the right to amend plans specifications and price without notice. Pack...



\$759,990

Maulik Patel

E: maulik@mimosahomes.com.au

P: 0430884855