



Batesford 16m

\$932,659

Lot 1908 Minnow Street - Berwick Waters Clyde North 3978 VIC  4  2  2

Mimosa Homes Proudly Presents the Batesford 16m

Mimosa Home & Land – True Value!

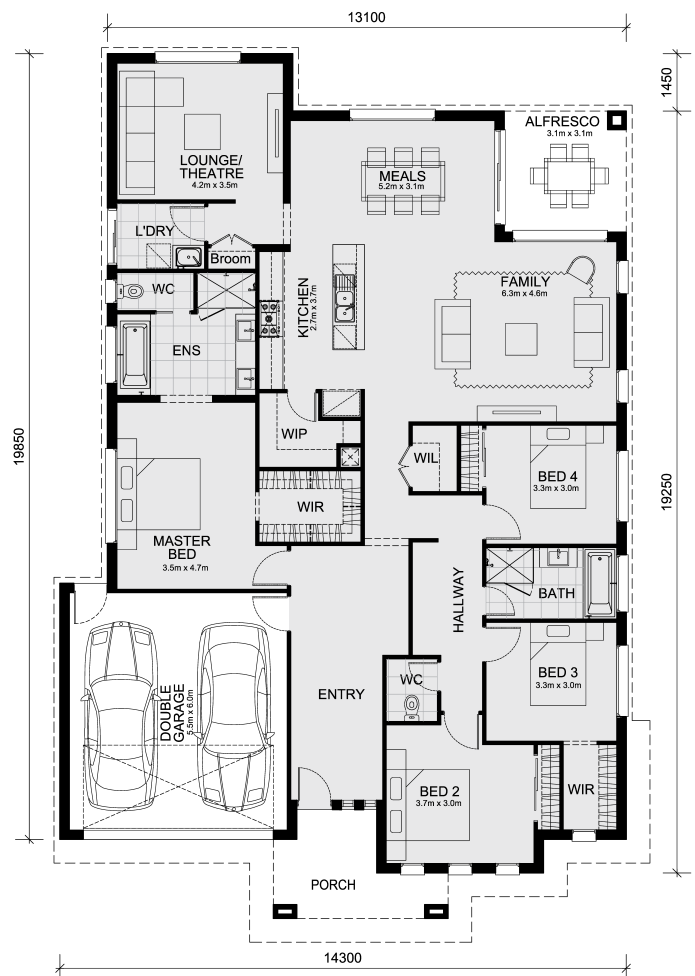
Enquire with Adam today on 0439 779 909

The Mornington 282 is packaged with a 448 m² lot facing northeast in the Berwick Waters Estate in Clyde North.

- Confidence: 50-Year Mimosa Homes Structural Warranty
- Fixed site costs
- Gas connection fee
- Fibre optic hub
- Timber-Look Laminate, Carpet, and Floor tiles
- Quick-slide robe doors
- 7-star energy rating, gas heating, and a hot water unit
- 2 TV points, 2 phone/data points. Towel & Toilet roll holders
- Termite Management System—Part A (slab), Part B (external)
- BAL 12.5 if required
- Eligible first-time home buyers can take advantage of no stamp duty and a \$10,000 government grant.

Disclaimer:

All plans & facades are provided for illustrative purposes only & are subject to change. Mimosa Homes reserves the right to modify plans, specifications & prices without prior notice. Package prices are based on a standard facade, standard inclusions & the availability of suitable land. Some developer or estate requirements may not be included. Images of facades and inclusions may show non-standard ...



Area Details

Land Size: 448 sqm
Building Size: 266.4 sqm

Contact: Adam Keleher
Phone: 0439 779 909
adamk@mimosahomes.com.au

www.mimosahomes.com.au