



Drysdale 10.5m

\$543,100

Lot 2 Jessica Ave Kilmore 3764 VIC



Mimosa Homes Proudly Presents the Drysdale 10.5m

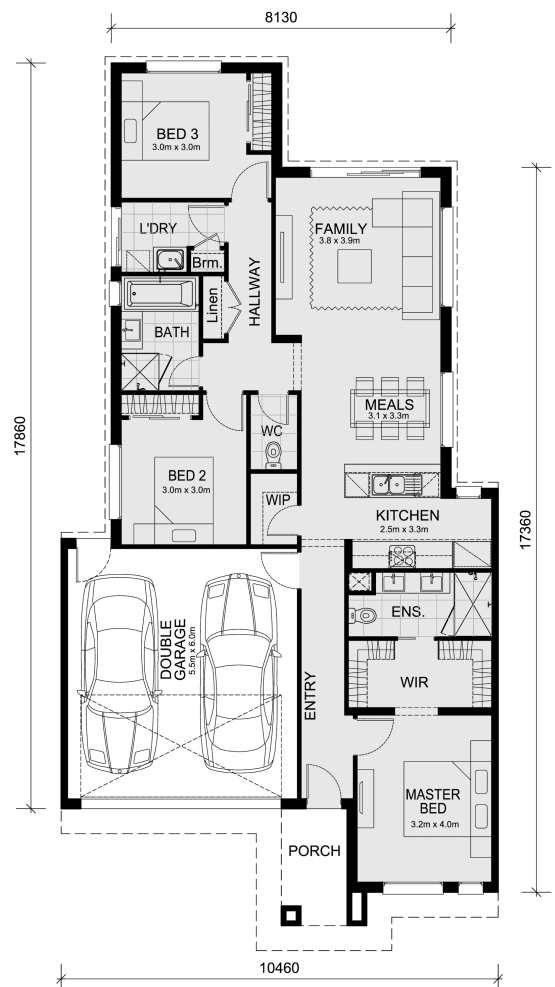
The Darley 178 House and Land Package!

* Mimosa Homes New Added Value Inclusions:

- Inclusive of site costs & connections with H1 class slab as per standard inclusions!
- 50 Year Structural Warranty!
- Quality floor coverings throughout entire home!
- Higher ceilings 2550mm to ground floor!
- Double Glazed Awning windows!
- LED Downlights to entire home!
- Vitrified Compact Surface benchtop to kitchen, bathroom & ensuite!
- 600mm S/S upright oven and cook top with S/S canopy rangehood!
- Stainless steel Dishwasher and Microwave
- 7 star energy!
- Fixed Site Costs
- Developer Guidelines Included
- Flexible floor plans & so much more!

CALL BUILDER DIRECT!

All plans and facades are indicative only and may change. Mimosa Homes may amend plans, specifications, and prices without notice. Package prices are based on a standard facade, standard inclusions, and suitable land availability, excluding developer/estate requirements. Facade and inclusion images may show non standard items not included in the price. Dimensions are approximate. Landscaping, fencing, decking, planter boxes, driveways, and paths are excluded unless specified....



Area Details

Land Size: 314 sqm
Building Size: 163.5 sqm

Contact: **Connie Boicos**
Phone: 0438 608 708
connieb@mimosahomes.com.au

www.mimosahomes.com.au