



## LOT 2017 Charlemont Rise Estate CHARLEMONT VIC 3217

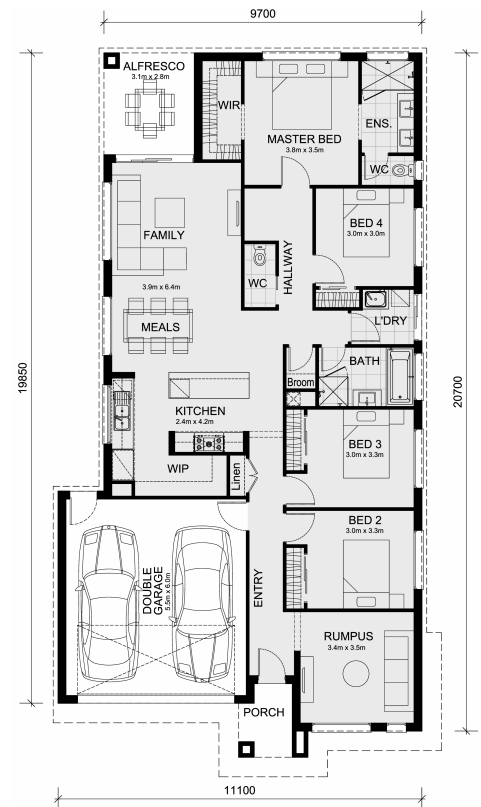
**Land Size: 351 m<sup>2</sup> House Size: 208 m<sup>2</sup>**

The Cosgrove 225 House and Land Package!

- Fixed Site Cost - INCLUDED
- 50-year Structural Warranty- INCLUDED
- Quality Floor Covering - INCLUDED
- 2.55m Ceiling Height - INCLUDED
- Ducted Heating & Evaporative Cooling - INCLUDED
- Double Glazing Windows - INCLUDED
- 3.5kW Solar Panels - INCLUDED
- Undermount Sink to Kitchen - INCLUDED
- 40mm Benchtop to Kitchen - INCLUDED
- 20mm Benchtops to Ensuite & Bathroom - INCLUDED
- LED Downlights to Entire Home - INCLUDED
- Dishwasher & Trim Kit Microwave- INCLUDED
- Flyscreens to all Openable Windows - INCLUDED
- Fibre Optic NBN Provision - INCLUDED
- AND MORE!

CALL BUILDER DIRECT!

All plans and facades are indicative only and may change. Mimosa Homes may amend plans, specifications, and prices without notice. Package prices are based on a standard facade, standard inclusions, and suitable land availability, excluding developer/estate requirements. Facade and inclusion images may show non-standard items not inclu...



**\$627,451**

**Digant Vania**

E: [digant@mimosahomes.com.au](mailto:digant@mimosahomes.com.au)

P: 0450573022