



4  2  2 

## Lot 203 Westring Kilmore 3764 VIC

**Land Size: 630 m<sup>2</sup> House Size: 255.2 m<sup>2</sup>**

The Armadale 278 House and Land Package!

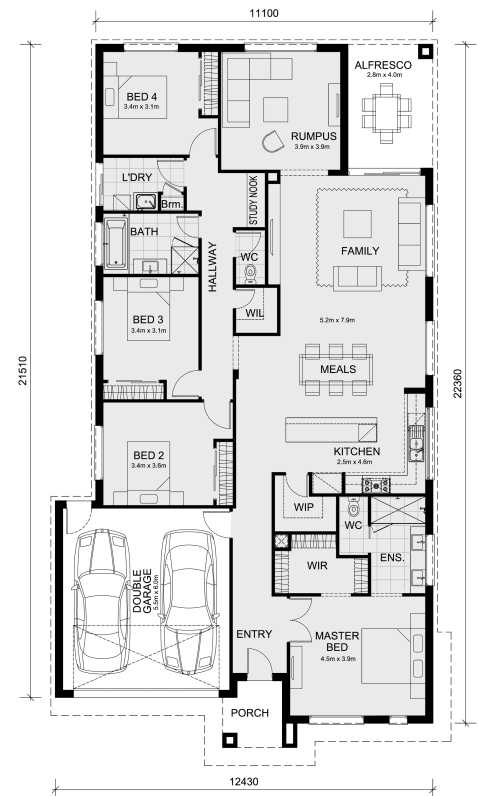
\* Mimosa Homes New Added Value Inclusions:

- 50 Year Structural Warranty!
- Fixed site costs & connections with H1 class slab as per standard inclusions!
- Quality floor coverings throughout entire home!
- 2730mm to ground floor!
- Double Glazed Awning windows!
- LED Downlights to entire home!
- Fibre Optic Provision!
- 40mm Vitrified Compact Surface benchtop to kitchen. -20mm Vitrified Compact Surface to bathroom & ensuite!
- 900mm cooktop and canopy rangehood!
- Stainless steel Dishwasher and Microwave with trim kit!
- 7 star energy!

Reverse Cycle Heating and Cooling with 4 Zones Driveway, Post box and Cloths line included.

CALL BUILDER DIRECT!

All plans and facades are indicative only and may change. Mimosa Homes may amend plans, specifications, and prices without notice. Package prices are based on a standard facade, standard inclusions, and suitable land availability, excluding developer/estate requirements. Facade and inclusion images ma...



# \$682,447

**Abin Paul**

E: [abin@mimosahomes.com.au](mailto:abin@mimosahomes.com.au)