



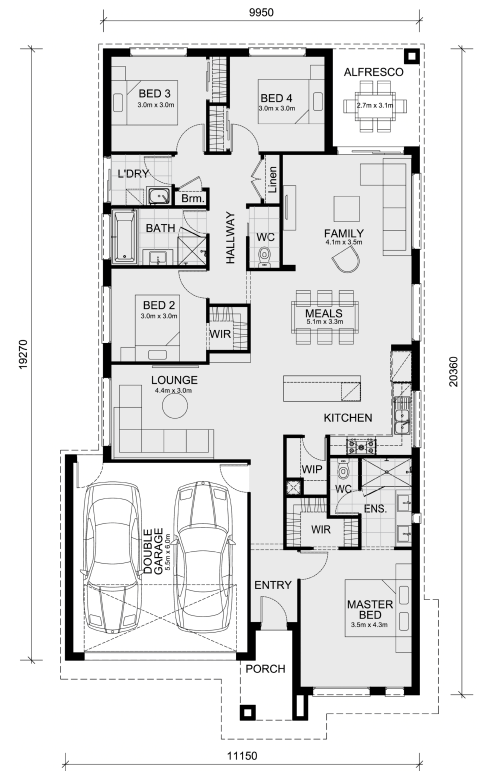
Lot 20317 Ellisburg Street Manor Lakes 3024 VIC

Land Size: 400 m² House Size: 207.3 m²

The Leemore 221 House and Land Package!

* Mimosa Homes New Added Value Inclusions:

- 50 Year Structural Warranty!
- Inclusive of site costs & connections with H1 class slab as per standard inclusions!
- Quality floor coverings throughout entire home!
- Higher ceilings 2550mm to ground floor!
- Double Glazed Awning windows!
- LED Downlights to entire home!
- Fibre Optic Provision!
- Vitrified Compact Surface benchtop to kitchen, bathroom & ensuite!
- 900mm S/S upright oven and cook top with...



\$642,410

Varinder Kumar

E: varinder@mimosahomes.com.au

P: 0433 300 773