



 4
  2
  2

Lot 211 Whimbrel street (Starling Estate) Officer 3809 VIC

Land Size: 289 m² House Size: 167.2 m²

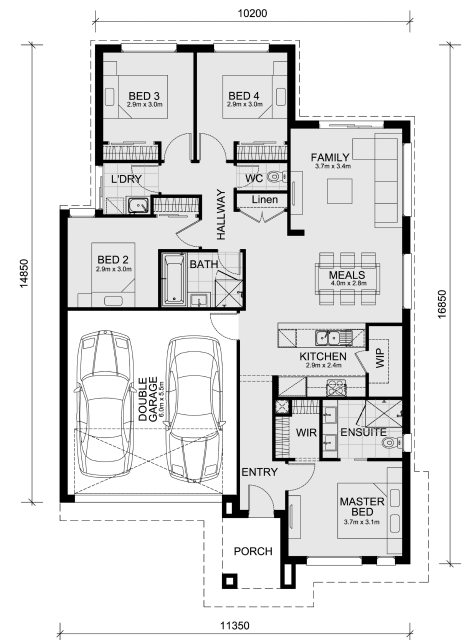
The Montrose 182 House and Land Package!

* Mimosa Homes New Added Value Inclusions:

- 50 Year Structural Warranty!
- Inclusive of site costs & connections with H1 class slab as per standard inclusions!
- Quality floor coverings throughout entire home!
- Higher ceilings 2550mm to ground floor!
- Double Glazed Awning windows!
- LED Downlights to entire home!
- Fibre Optic Provision!
- Vitrified Compact Surface benchtop to kitchen, bathroom & ensuite!
- 600mm S/S upright oven and cook top with S/S canopy rangehood!
- Stainless steel Dishwasher and Microwave with trim kit!
- 7 star energy!
- Flexible floor plans & so much more!

CALL BUILDER DIRECT!

All plans and facades are indicative only and may change. Mimosa Homes may amend plans, specifications, and prices without notice. Package prices are based on a standard facade, standard inclusions, and suitable land availability, excluding developer/estate requirements. Facade and inclusion images may show non standard items not included in ...



\$669,360

Sammy Singh

E: sammy@mimosahomes.com.au