



5 3 2

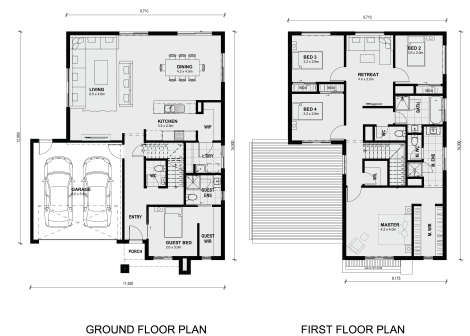
Lot 2186 Windermere Estate MAMBOURIN VIC 3024

Land Size: 356 m² House Size: 262 m²

Without compromising on space and practicality, the Benalla 282 features all the essential elements you could want in your dream home. The ground floor includes an open plan living, meals and kitchen, guest bedroom with ensuite and large walk-in wardrobe, powder room, large walk-in pantry and a laundry with access to outside. The first floor features 4 spacious bedrooms, a central lounge area, separate bathroom, separate w.c and a luxurious master bedroom with a large walk-in wardrobe and ensuite, providing the perfect home for growing families.

Builder's Direct : Erick Sutedja 0416 575 858

All plans and facades are indicative only and may change. Mimosa Homes may amend plans, specifications, and prices without notice. Package prices are based on a standard facade, standard inclusions, and suitable land availability, excluding developer/estate requirements. Facade and inclusion images may show non-standard items not included in the price. Dimensions are approximate. Landscaping, fenc...



\$734,900

Erick Sutedja

E: erick@mimosahomes.com.au

P: 0416575858