



4 2 2

## LOT 230 MONTANE WAY DEANSIDE VIC 3336

**Land Size: 308 m<sup>2</sup> House Size: 176 m<sup>2</sup>**

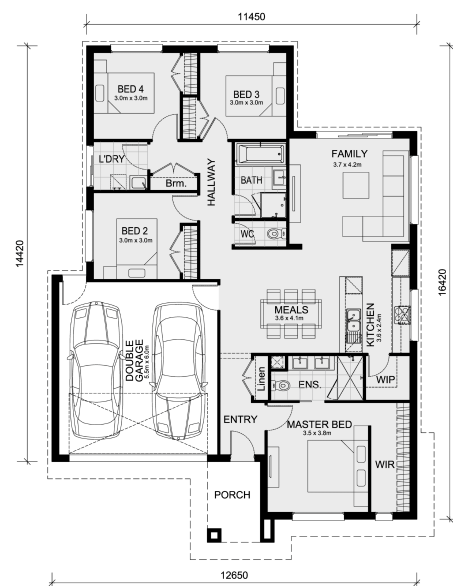
The Lismore 192 House and Land Package!

\* NCC Compliant Floorplan

\* Mimosa Homes Added Value Inclusions:

- 7 Star Rating!
- 2700mm Ceiling Height
- Inclusive of site costs & connections with H1 class slab as per standard inclusions!
- Quality floor coverings throughout entire home!
- Double Glazed Awning windows
- Downlights Through out the house!
- 40mm Vitrified Compact Surface benchtop to kitchen!
- 900mm S/S upright oven and cook top with S/S canopy rangehood!
- Stainless steel Dishwasher and Microwave with trim kit!
- Overhead cupboards & wine rack! (Design specific)
- Flexible floor plans & so much more!
- 3.5kW Solar System!
- Evaporative Cooling Unit!
- Home Alarm System

CONTACT BUILDER DIRECT ! MAULIK 0430 884 855...



# \$657,990

**Maulik Patel**

E: [maulik@mimosahomes.com.au](mailto:maulik@mimosahomes.com.au)

P: 0430884855