



Stanley 248

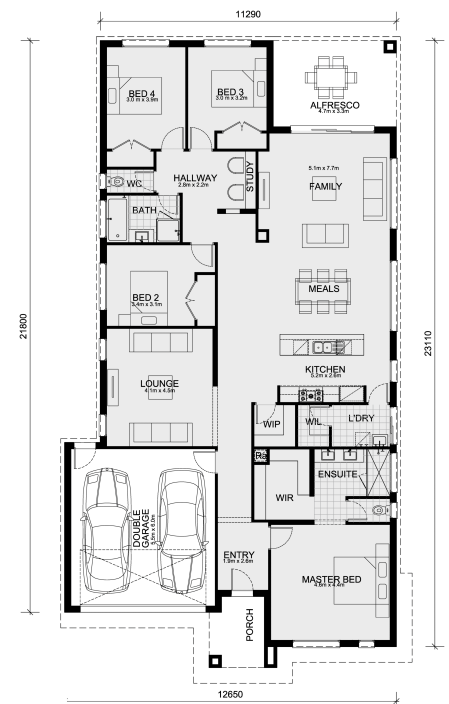
4  2  2 

Lot 2475 #32 Belcello Street - Botanic Ridge Estate BOTANIC RIDGE

VIC 3977

Land Size: 521 m² House Size: 264 m²

- Up to 50% OFF Site Costs!!
- Low Profile Roof tiles
- Low-profile Evaporative cooling
- NBN Provision
- Home Alarm System
- LED downlights to the entire home
- 40mm Caesarstone benchtop to kitchen
- 20mm Caesarstone benchtop to bathroom and ensuite
- Undermount sink to the kitchen
- Soft close drawers and doors throughout the kitchen
- 600mm towel rail to bathroom and ensuite and toilet roll holders
- 800mmW laminate Laundry trough
- Inclusive of site costs & connections with H1 class slab as per standard inclusions!
- Range of facades including feature render!
- Quality floor coverings throughout entire home!
- Higher ceilings 2550mm!
- Downlights to living areas!
- Stone bench top to kitchen!
- 900mm S/S upright oven and cook top with S/S canopy rangehood!
- Stainless steel Dishwasher and Microwave with trim kit!
- Overhead cupboards & wine rack! (Design specific)
- Remote control panel sectional lift garage door!
- 6 star energy with solar hot water!
- Flexible floor plans & so mu...



DON'T MISS OUT

\$756,000

Chris Prystupa

E: chris@mimosahomes.com.au

P: 0435081699