



4 2 2

Lot 2816 Wicklow Crescent DONNYBROOK VIC 3064

Land Size: 350 m² House Size: 176 m²

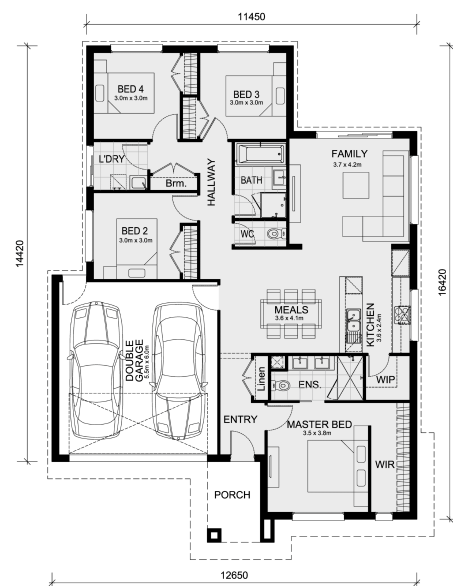
The Lismore 192 House and Land Package!

* Mimosa Homes Added Value Inclusions:

- Inclusive of site costs & connections with H1 class slab as per standard inclusions!
- Quality floor coverings throughout entire home!
- Higher ceilings 2550mm to ground floor!
- Double Glazed Awning windows
- Downlights to living areas!
- Vitrified Compact Surface benchtop to kitchen!
- 600mm built-in oven!
- Stainless steel Dishwasher and Microwave with trim kit!
- Overhead cupboards & wine rack! (Design specific)
- Remote control panel sectional lift garage door!
- 7 Star Energy Rating with Solar hot water!
- Flexible floor plans & so much more!

CALL BUILDER DIRECT! NAP MADRIAGA - 0427631471

All plans and facades are indicative only and may change. Mimosa Homes may amend plans, specifications, and prices without notice. Package prices are based on a standard facade, standard inclusions, and suitable land availability, excluding developer/estate requirements. Facade and inclusion images...



\$661,840

Nap Madriaga

E: nap@mimosahomes.com.au

P: 0427631471