



4 2 2

LOT 29 Brendan Estate GREENVALE VIC 3059

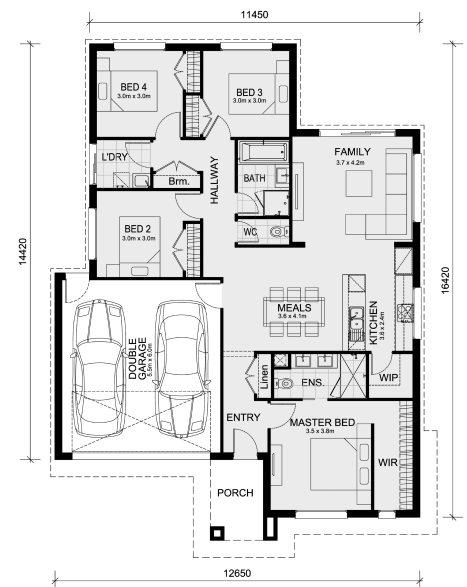
Land Size: 448 m² House Size: 176 m²

The Lismore 192 House and Land Package!

- Fixed Site Cost - INCLUDED
- Quality Floor Covering - INCLUDED
- Ducted Heating & Evaporative Cooling - INCLUDED
- Double Glazing Windows - INCLUDED
- 3.5kW Solar Panels - INCLUDED
- Intercom and Doorbell System - INCLUDED
- Undermount Sink to Kitchen - INCLUDED
- 40mm Stone Benchtop to Kitchen - INCLUDED
- 20mm Stone Benchtops to Ensuite & Bathroom - INCLUDED
- LED Downlights to Entire Home - INCLUDED
- Dishwasher & Trim Kit Microwave- INCLUDED
- Flyscreens to all Openable Windows - INCLUDED
- Fibre Optic NBN Provision - INCLUDED
- AND MORE!

CALL BUILDER DIRECT!

All plans and facades are indicative concepts only and are not intended to be accurate depictions. Mimosa Homes reserves the right to amend plans specifications and price without notice. Package prices are based on a standard facade, standard inclusions, the availability of suitable land for development and does not include developer/estate requirements. Facade and ...



\$844,800

Digant Vania

E: digant@mimosahomes.com.au

P: 0450573022