

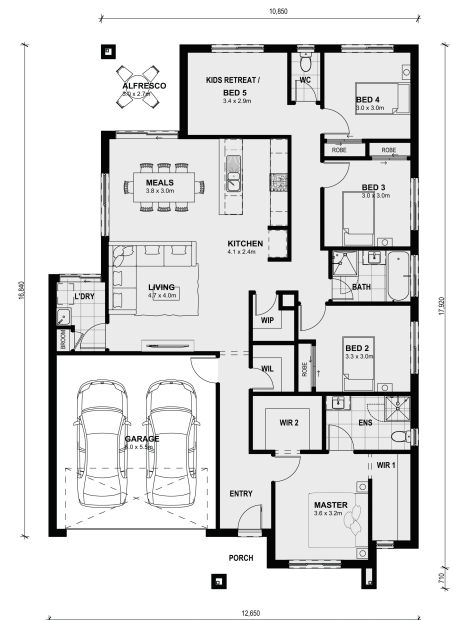


5 2 2

Lot 2910 Redfield Street - Smiths Lane CLYDE VIC 3978

Land Size: **House Size:209 m²**

Designed with a generous central living and entertaining area and a separate lounge room, your friends will be green with envy. Parents will love the two very generous walk-in wardrobes and ensuite off the master bedroom. The floor plan includes 3 additional bedrooms with the option for a 5th bedroom, separate WC, bathroom, multi access laundry, walk-in linen, built-in wardrobes, walk-in pantry and a double garage. The Hexham exceeds the requirements of the modern family in every way....



\$734,000

John Lynch

E: johnl@mimosahomes.com.au

P: 0455825096