



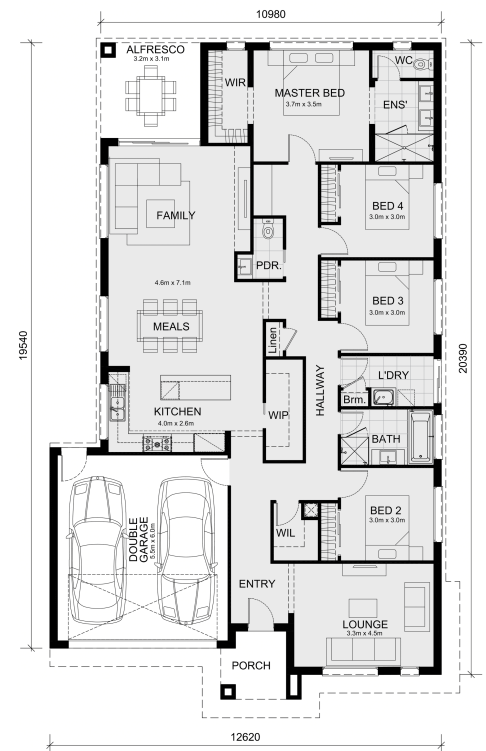
4  2  2 

## Lot 3033 Terrene Street - Five Farms Estate Clyde North 3978 VIC

**Land Size: 457 m<sup>2</sup> House Size: 233.3 m<sup>2</sup>**

The Allendale 253 and a 457 sqm lot facing north are located at Five Farms, Clyde North.

- \* Confidence: 50-Year Mimosa Homes Structural Warranty
- \* Fixed site costs, including BAL 12.5
- \* Timber-look laminate, carpet, and floor tiles
- \* 2,550mm high ceilings
- \* Stone benchtops – kitchen, ensuite & bathroom
- \* 900mm oven, cooktop & rangehood (600mm for homes < 20 sq)
- \* Microwave with trim kit & Dishwasher
- \* Semi-floating vanities (Double to Ensuite) & Tiled shower bases
- \* Quick-slide robe doors
- \* LED downlights throughout, external lights & garage strip light
- \* Internal garage access with 2 Garage door remotes
- \* Flyscreens to windows & obscure-glazing to ensuite & bathroom
- \* 7-Star energy rating. Heating. Hot Water Unit.
- \* Concrete flooring in alfresco. 3-coat paint system for walls.
- \* 2 TV points, 2 phone/data points. Towel & toilet roll holders included
- \* Termite Management System – Part A (slab), Part B (external)
- \* Occupational Health & Safety compliance, including asset protection



# \$825,530

**Adam Keleher**

E: [adamk@mimosahomes.com.au](mailto:adamk@mimosahomes.com.au)

P: 0439 779 909