



4 2 2

LOT 311 NICHOLAS ESPLANADE (MATILDA) DONNYBROOK VIC 3064

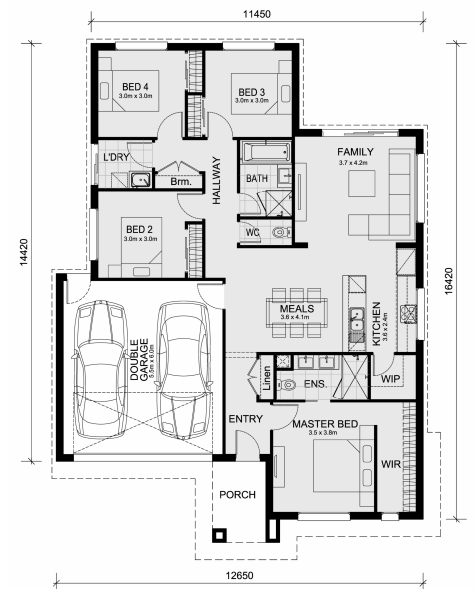
Land Size: 290 m² House Size: 176 m²

MIMOSA HOMES PROUDLY PRESENTS
The Lismore 192 House and Land Package!
Located in the Heart of Donnybrook

PACKAGE HIGHLIGHTS

- â€¢ Turnkey Inclusions + Exceptional Value
- â€¢ Inclusive of site costs & connections with H1 class slab
- â€¢ 50-Year Structural Warranty for long-term peace of mind
- â€¢ Quality floor coverings throughout the entire home
- â€¢ Higher ceilings - 2550mm to ground floor
- â€¢ Double glazed awning windows - enhanced comfort and insulation
- â€¢ LED downlights throughout
- â€¢ Vitrified Compact Surface benchtops in kitchen, bathroom & ensuite
- â€¢ 600mm Stainless steel upright oven & cooktop with canopy rangehood
- â€¢ Dishwasher & microwave included - stainless steel
- â€¢ Overhead cupboards to kitchen (Design specific)
- â€¢ 2000mm high framed shower screens to ensuite & bathroom
- â€¢ 7-Star Energy Rating - sustainable and efficient
- â€¢ Flexible floor plans to suit your lifestyle

THE Lismore 192
A perfect blend of contemporary design, functionality, and space ...



\$585,000

Rajeev Sethi

E: rajeev@mimosahomes.com.au
P: 0414536048