



4 2 2

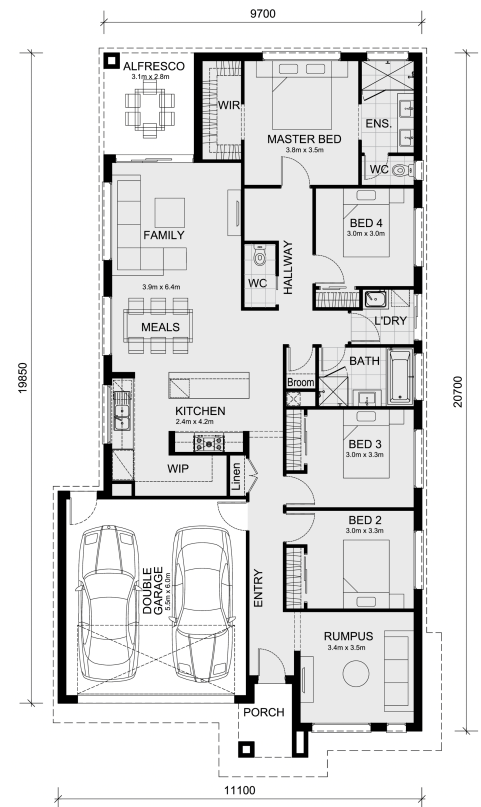
## Lot 325 Keighley Street Strathtulloh 3338 VIC

**Land Size: 350 m<sup>2</sup> House Size: 208 m<sup>2</sup>**

The Cosgrove 225 House and Land Package!

\* Mimosa Homes New Added Value Inclusions:

- 50 Year Structural Warranty!
- Inclusive of site costs & connections with H1 class slab as per standard inclusions!
- Quality floor coverings throughout entire home!
- Higher ceilings 2550mm to ground floor!
- Double Glazed Awning windows!
- LED Downlights to entire home!
- Fibre Optic Provision!
- Vitrified Compact Surface benchtop to kitchen, bathroom & ensuite!
- 900mm S/S upright oven and cook top...



# \$622,718

**Hussain Sabir**

E: [hussain@mimosahomes.com.au](mailto:hussain@mimosahomes.com.au)

P: 0411 788 531