



V Boho 161

3 bedrooms, 2 bathrooms, 2 cars

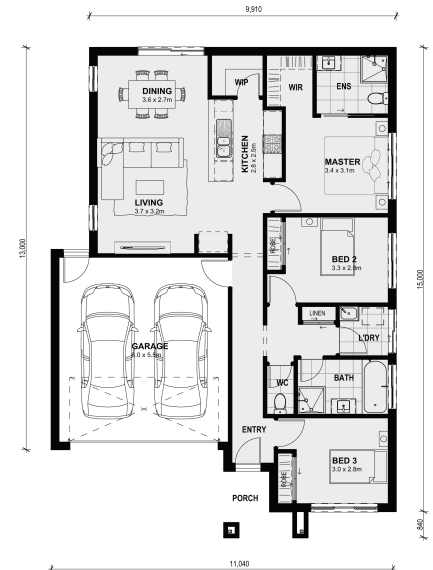
Lot 327 #8 Damiana Ave - Verve Estate CLYDE NORTH VIC 3978

Land Size: 262 m² House Size: 150 m²

Title anticipated Q2 2024

The combined living, meals and kitchen areas make spending time with family and friends easy in the Boho 161. With two separate bedrooms that share a bathroom located at the rear of the home and a large master bedroom with a walk-in wardrobe and ensuite at the rear of the home. The Boho 161 has the ability to fit on smaller blocks whilst not compromising on functionality.

All plans and facades are indicative concepts only and are not intended to be accurate depictions. Mimosa Homes reserves the right to amend plans specifications and price without notice. Package prices are based on a standard facade, standard inclusions, the availability of suitable land for development and does not include developer/estate requirements. Facade and inclusion images shown may not be standard and may not be included in the price of the home. All dimensions are approximate. Package prices do not include landscaping, fencing, decking, planter boxes, driveways and paths unless ...



\$585,795

Chris Prystupa

E: chris@mimosahomes.com.au

P: 0435081699