



## Lot 329 CADENZA STREET, RIVERFIELD ESTATE CLYDE NORTH

**VIC 3978**

**Land Size: 350 m<sup>2</sup> House Size: 171 m<sup>2</sup>**

The Belmont 188 House and Land Package!

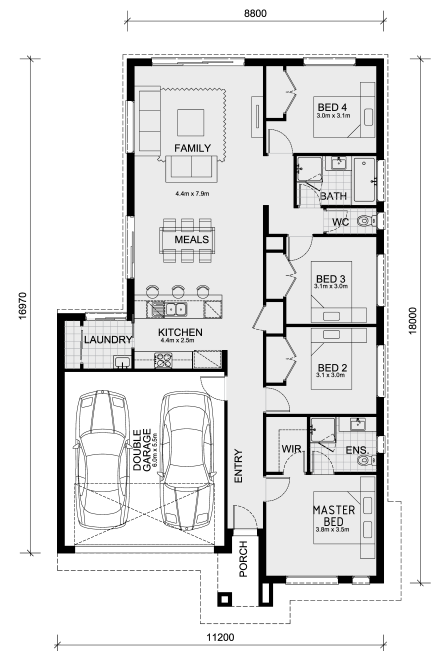
\* Experience The Mimosa Homes Difference!

\* Mimosa Homes Added Value Inclusions:

- Inclusive of site costs & connections with H1 class slab as per standard inclusions!
- Range of facades including feature render!
- Quality floor coverings throughout entire home!
- Higher ceilings 2550mm!
- Downlights to living areas!
- Stone bench top to kitchen!
- 600mm S/S upright oven and cook top with slide-out rangehood!
- Stainless steel Dishwasher and Microwave with trim kit!
- Overhead cupboards & wine rack! (Design specific)
- Remote control panel sectional lift garage door!
- 6 star energy with solar hot water!
- Flexible floor plans & so much more!

**CALL BUILDER DIRECT!**

All plans and facades are indicative concepts only and are not intended to be accurate depictions. Mimosa Homes reserves the right to amend plans specifications and price without notice. Package prices are based on a standard facade, standard inclusions,...



# \$651,000

**Rohit Uppal**

E: [rohitu@mimosahomes.com.au](mailto:rohitu@mimosahomes.com.au)