



5 3 2

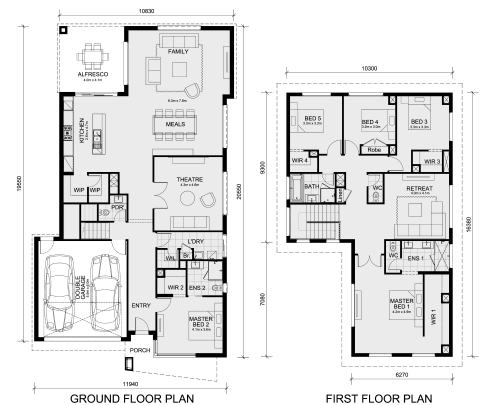
## Lot 345 Hearth Street - Harli Estate CRANBOURNE VIC 3977

**Land Size: 448 m<sup>2</sup>    House Size: 368 m<sup>2</sup>**

The Balmoral 396 House and Land Package!  
Cleverly designed to be larger than life

Featuring a generous open plan family & meals, large open kitchen with a butlers pantry, theatre room and a separate guest suite with its own bathroom and robe on the ground floor, while still allowing for 3 bedrooms, retreat and a generous master suite on the first floor. With its clever layout and accommodating design, the Balmoral perfectly caters for a large family all while offering a touch of luxury for everyday living.

...



# \$1,065,000

**John Lynch**

E: [johnl@mimosahomes.com.au](mailto:johnl@mimosahomes.com.au)

P: 0455825096