



3 2 2

Lot 3628 Hateno Circuit - Riverfield Estate Clyde 3978 VIC

Land Size: 262 m² House Size: 150.2 m²

Mimosa Home & Land – True Value!

Enquire with Adam today on 0439 779 909

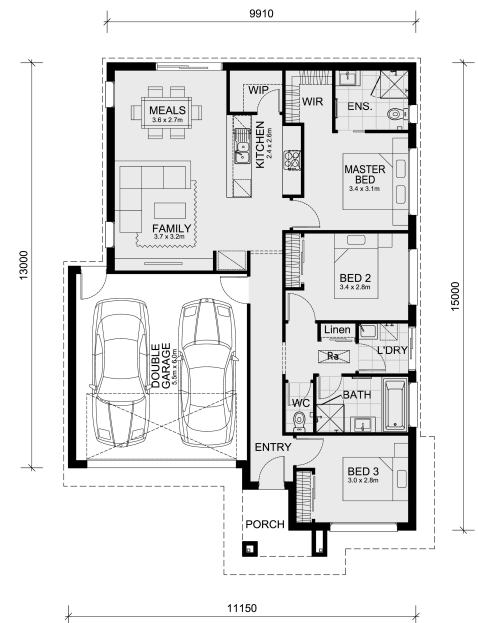
The Boho 161 is packaged on a 262 m² lot facing west in Riverfield Estate in Clyde.

- * Fixed site costs—only \$3,500 (limited-time offer)
- * 7-Star energy rating
- * Continuous flow hot water unit
- * Timber look laminate flooring and carpets
- * Termite protection as required
- * 2 Remote controls for the garage
- * Recessed tiled shower bases
- * Modern Gas Cooktop & electric oven, and range hood
- * BAL 12.5 bushfire compliance
- * Sewer tie cut back
- * Occupational Health & Safety requirements
- * Recycled Water
- * Gas connection fee
- * 2590mm to the ground floor
- * Re-establishment survey
- * Eligible first-time home buyers can take advantage of no stamp duty and a \$10,000 government grant.

Disclaimer:

All plans & facades are provided for illustrative purposes only & are subject to change. Mimosa Homes reserves the right to modify plans, specifications & prices without prior notice. Package prices are based on a standard facade.

\$602,274



Adam Keleher

E: adamk@mimosahomes.com.au