



Lot 3630 Hateno Circuit - Riverfield Clyde 3978 VIC

Land Size: 294 m² House Size: 176.5 m²

Mimosa Home & Land – True Value!

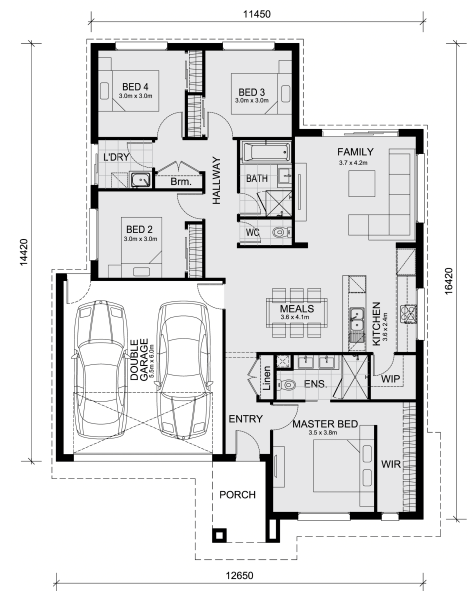
Enquire with Adam today on 0439 779 909

The Lismore 192 is packaged on a 294 m² lot facing west in Riverfield Estate in Clyde.

- * Confidence: 50-Year Mimosa Homes Structural Warranty
- * Fixed site costs
- * Timber-Look Laminate, Carpet, and Floor tiles
- * Quick-slide robe doors
- * Internal garage access with 2 garage door remotes
- * 7-star energy rating, gas heating, and a hot water unit
- * 2 TV points, 2 phone/data points. Towel & Toilet roll holders
- * Termite Management System—Part A (slab), Part B (external)
- * Occupational Health & Safety Compliance, including Asset Protection
- * BAL 12.5 if required
- * Recycled Water
- * Gas connection fee
- * Eligible first-time home buyers can take advantage of no stamp duty and a \$10,000 government grant.

Disclaimer:

All plans & facades are provided for illustrative purposes only & are subject to change. Mimosa Homes reserves the right to modify plans, specifications & prices without prior notice. Package prices are...



\$663,280

Adam Keleher

E: adamk@mimosahomes.com.au

P: 0439 779 909