



## V Epsom 240

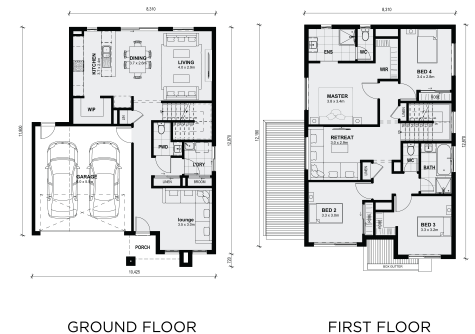
4 bedrooms 3 bathrooms 2 cars

### Lot 3930 Meridian estate CLYDE NORTH VIC 3978

**Land Size: 400 m<sup>2</sup> House Size: 222 m<sup>2</sup>**

Dedicated to rest and relaxation the Epsom features four bedrooms all located on the first floor and is accompanied by a retreat and shared bathroom. On the ground floor, the highlight is the large open kitchen, meals and dining area that also has a large walk-in wardrobe, powder room, walk-in linen and a separate front lounge as the perfect sanctuary.

All plans and facades are indicative concepts only and are not intended to be accurate depictions. Mimosa Homes reserves the right to amend plans specifications and price without notice. Package prices are based on a standard facade, standard inclusions, the availability of suitable land for development and does not include developer/estate requirements. Facade and inclusion images shown may not be standard and may not be included in the price of the home. All dimensions are approximate. Package prices do not include landscaping, fencing, decking, planter boxes, driveways and paths unless specified.



# \$770,000

**Raj Singh**

E: [rajinder@mimosahomes.com.au](mailto:rajinder@mimosahomes.com.au)

P: 0430172269