



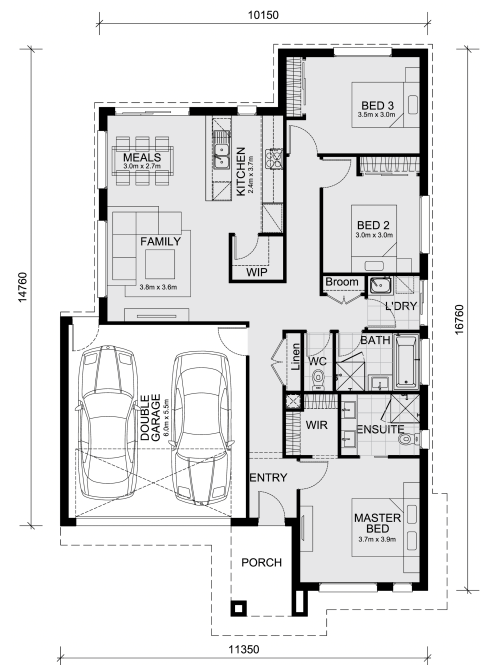
3 2 2

Lot 402 Peppermint Gum Road Cranbourne West 3977 VIC

Land Size: 313 m² House Size: 161.6 m²

The Jamieson 176 and 313 sqm of land facing east are located at Harli Estate, Cranbourne West..

- * Confidence: 50-Year Mimosa Homes Structural Warranty
- * Fixed site costs, including BAL 12.5
- * Timber-look laminate, carpet, and floor tiles
- * 2,550mm high ceilings
- * Stone benchtops â€” kitchen, ensuite & bathroom
- * 900mm oven, cooktop & rangehood (600mm for homes < 20 sq)
- * Microwave with trim kit & Dishwasher
- * Semi-floating vanities (Double to Ensuite) & Tiled shower bases
- * Quick-slide robe doors
- * LED downlights throughout, external lights & garage strip light
- * Internal garage access with 2 Garage door remotes
- * Flyscreens to windows & obscure-glazing to ensuite & bathroom
- * 7-Star energy rating. Heating. Hot Water Unit.
- * Concrete flooring in alfresco. 3-coat paint system for walls.
- * 2 TV points, 2 phone/data points. Towel & toilet roll holders included
- * Termite Management System â€” Part A (slab), Part B (external)
- * Occupational Health & ...



\$746,910

Adam Keleher

E: adamk@mimosahomes.com.au

P: 0439 779 909