



4 2 2

## Lot 418 Biennial Road PAKENHAM VIC 3810

**Land Size: 543 m<sup>2</sup> House Size: 246 m<sup>2</sup>**

The Saba 260 House and Land Package!

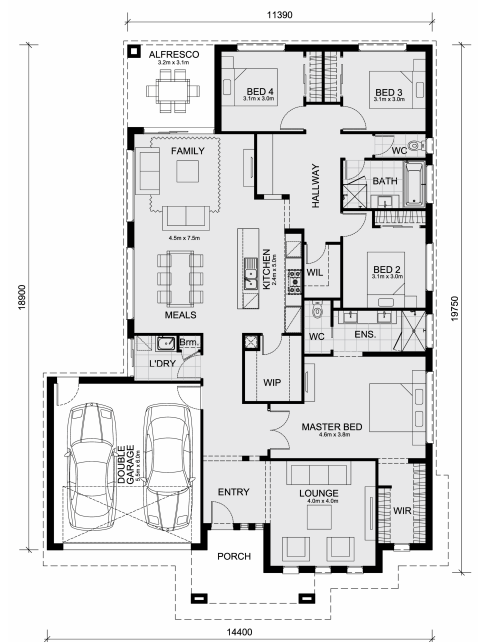
\* Mimosa Homes New Added Value Inclusions:

- Inclusive of site costs & connections with H1 class slab as per standard inclusions!
- 50-year Structural Warranty!
- Quality floor coverings throughout entire home!
- Higher ceilings 2550mm to ground floor!
- Induction cooktop, 280 litre heat pump, reverse cycle airconditioning

CALL BUILDER DIRECT! Ramon Doval Santos on 0434 522 500

All plans and facades are indicative only and may change. Mimosa Homes may amend plans, specifications, and prices without notice. Package prices are based on a standard facade, standard inclusions, and suitable land availability, excluding developer/estate requirements. Facade and inclusion images may show non-standard items not included in the price. Dimensions are approximate. Landscaping, fencing, decking, planter boxes, driveways, and paths are excluded unless specified.

...



# 777,765

**Ramon Doval Santos**  
E: [ramon@mimosahomes.com.au](mailto:ramon@mimosahomes.com.au)  
P: 0434522500