



V Avoca 232

4 bedrooms 3 bathrooms 2 cars

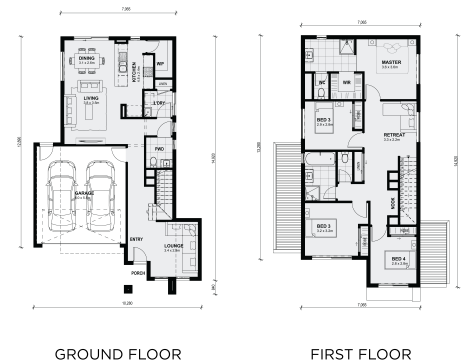
Lot 4221 Alambadi Street - Meridian Estate CLYDE NORTH VIC 3978

Land Size: 287 m² House Size: 215 m²

The distinctive features of the Avoca 232 is the large bedrooms located on the first floor, positioned with a third living area that truly elevates your modern lifestyle. On the ground floor is a front lounge, the perfect getaway to read in peace, a powder room and an open kitchen meals and dining area allowing you more time to entertain with friends and family.

All plans and facades are indicative concepts only and are not intended to be accurate depictions. Mimosa Homes reserves the right to amend plans specifications and price without notice. Package prices are based on a standard facade, standard inclusions, the availability of suitable land for development and does not include developer/estate requirements. Facade and inclusion images shown may not be standard and may not be included in the price of the home. All dimensions are approximate. Package prices do not include landscaping, fencing, decking, planter boxes, driveways and paths unless specified.

...



\$726,000

Chris Prystupa

E: chris@mimosahomes.com.au

P: 0435081699