



4 2 2

## Lot 423 Pinhook Street MANOR LAKES VIC 3024

**Land Size: 350 m<sup>2</sup> House Size: 186 m<sup>2</sup>**

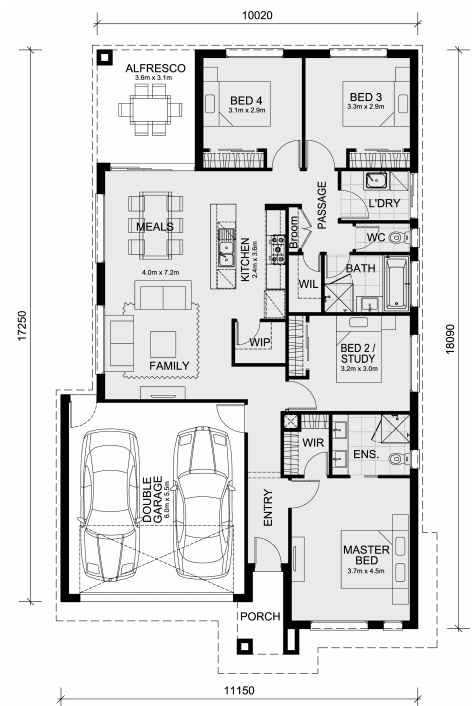
The Enfield 201 House and Land Package!

\* Mimosa Homes New Added Value Inclusions:

- Inclusive of site costs & connections with H1 class slab as per standard inclusions!
- 50-year Structural Warranty!
- Quality floor coverings throughout entire home!
- Higher ceilings 2550mm to ground floor!
- Double Glazed Awning windows!
- LED Downlights to entire home!
- Vitrified Compact Surface benchtop to kitchen, bathroom & ensuite!
- 900mm S/S upright oven and cook top with S/S canopy rangehood!
- Stainless steel Dishwasher and Microwave
- Overhead cupboards to kitchen (Design specific)
- 2000mm High framed shower screen to ensuite & bathroom!
- 7 star energy!
- Brick Infills to Side and Rear of Home (2550mm Ceiling Height)
- Low Profile Roof Tiles
- Low Profile Evaporative Cooling Unit
- Flexible floor plans & so much more!

CALL BUILDER DIRECT! Visit our display home at 3-5 Cooma Street Manor Lakes  
(Manor Lakes Estate)

All plans and facades are indicative only and may ch...



# \$628,357

**Jay Yu**

E: [jay@mimosahomes.com.au](mailto:jay@mimosahomes.com.au)

P: 0414416828