



Armadale 253

4 bedrooms 2 bathrooms 2 cars

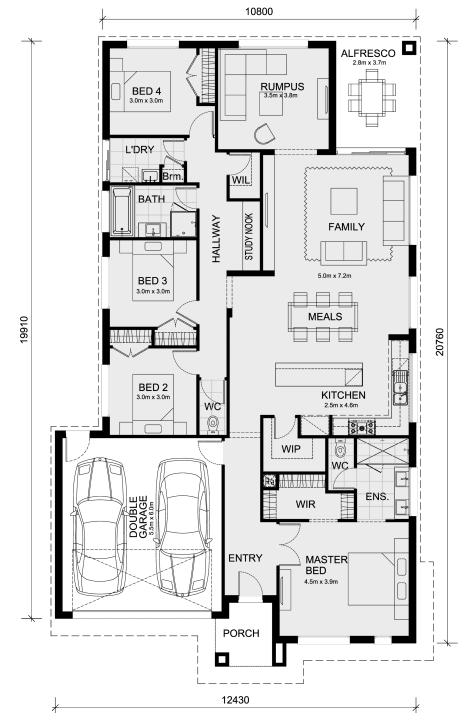
Lot 427 The ReserveEstate Estate Armadale 253

ARMSTRONG CREEK VIC
Land Size: 631 m² House Size: 233 m²
3217

- Low Profile Roof tiles
- Low-profile Evaporative cooling
- NBN Provision
- LED downlights to the entire home
- 20mm Caesarstone benchtop to bathroom and ensuite
- 20mm waterfall ends to kitchen
- 600mm towel rail to bathroom and ensuite and toilet roll holders
- tiled showerbase to ensuite and bathroom
- brick infills
- Inclusive of site costs & connections with H1 class slab as per standard inclusions!
- Range of facades including feature render!
- Quality floor coverings throughout entire home!
- Higher ceilings 2550mm!
- 900mm S/S upright oven and cook top with S/S canopy rangehood!
- Stainless steel Dishwasher and Microwave with trim kit!
- Overhead cupboards & wine rack! (Design specific)
- Remote control panel sectional lift garage door!
- 6 star energy with solar hot water!
- Flexible floor plans & so much more!

Call Beau 0435 123 663

All plans and facades are indicative concepts only and are not intended to be accurate depictions. Mimosa Homes reserves the right to amend...



\$769,543

Beau Huppert

E: beau@mimosahomes.com.au

P: 0435123663