



Batesford 14m

\$829,185

Lot 431 Harness Street - Northside Estate Clyde North 3978 VIC  4  2  2

Mimosa Homes Proudly Presents the Batesford 14m

Mimosa Home & Land – True Value!

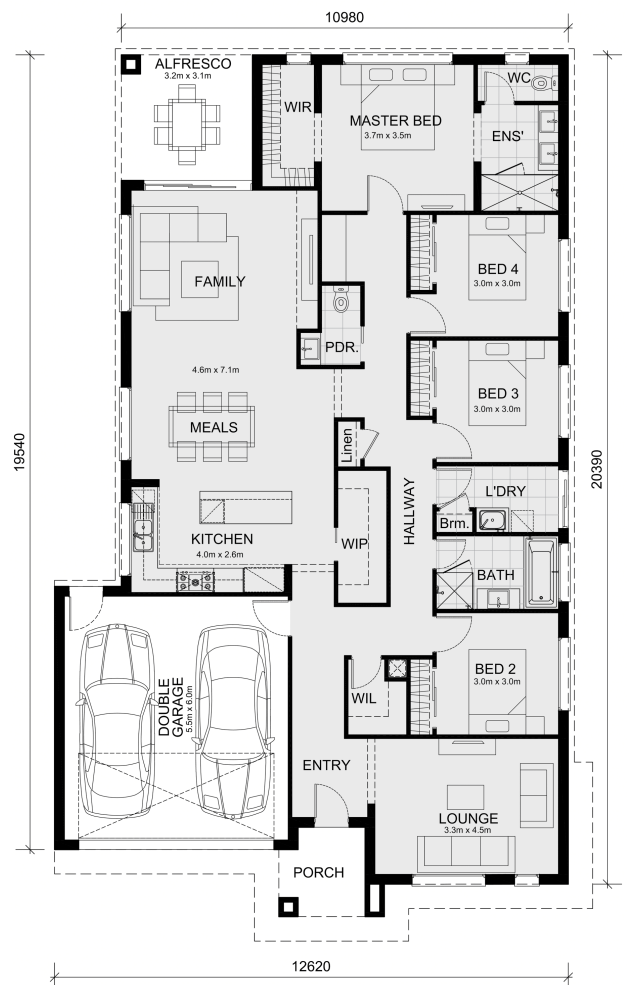
Enquire with Adam today on 0439 779 909

The Allendale 253 is packaged on a 392 m² lot facing north in Northside Estate in Clyde North.

- Confidence: 50-Year Mimosa Homes Structural Warranty
- Fixed site costs
- Recycled water
- Color-thru driveway before occupancy
- 3-phase power
- 3000-liter tank
- Bricks and low profile tiles
- Evaporative cooling or 2 split systems
- Induction cooktop, built-in oven and heat pump
- Timber-Look Laminate, Carpet, and Floor tiles
- Semi-floating vanities (double to ensuite) & tiled shower bases
- Quick-slide robe doors
- Internal garage access with 2 garage door remotes
- 2 TV points, 2 phone/data points. Towel & toilet-roll holders included
- Termite Management System—Part A (slab), Part B (external)
- BAL 12.5 if required
- Eligible first-time home buyers can take advantage of no stamp duty and a \$10,000 government grant.

Disclaimer:

All plans & facades are provided for illustrative purposes only & are subject to change. Mimosa Homes reserves the right to modify plans, specifications & prices without prior notice. Package prices are based on a standard facade...



Area Details

Land Size: 392 sqm
Building Size: 233.3 sqm

Contact: Adam Keleher
Phone:
adamk@mimosahomes.com.au

www.mimosahomes.com.au