



## V Boho 161

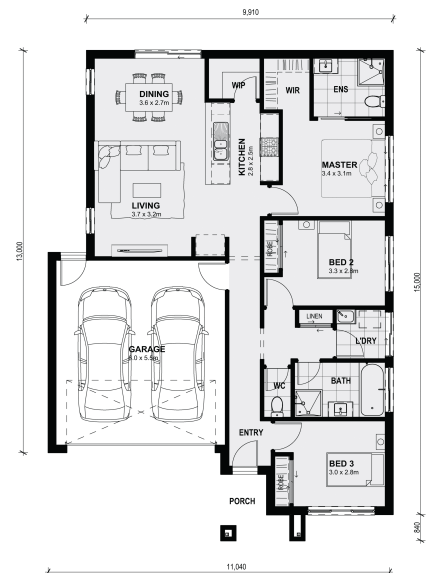
3 Bedrooms 2 Bathrooms 2 Car Spaces

### Lot 4316 #96 Carora Circuit - Meridian Estate CLYDE NORTH VIC 3978

**Land Size: 285 m<sup>2</sup> House Size: 150 m<sup>2</sup>**

The combined living, meals and kitchen areas make spending time with family and friends easy in the Boho 161. With two separate bedrooms that share a bathroom located at the front of the home and a large master bedroom with a walk-in wardrobe and ensuite at the rear of the home. The Boho 161 has the ability to fit on smaller blocks whilst not compromising on functionality. Title Expected Sept/Oct 2023 on land.

All plans and facades are indicative concepts only and are not intended to be accurate depictions. Mimosa Homes reserves the right to amend plans specifications and price without notice. Package prices are based on a standard facade, standard inclusions, the availability of suitable land for development and does not include developer/estate requirements. Facade and inclusion images shown may not be standard and may not be included in the price of the home. All dimensions are approximate. Package prices do not include landscaping, fencing, decking, planter boxes, driveways and pa...



# \$590,000

**Chris Prystupa**

E: [chris@mimosahomes.com.au](mailto:chris@mimosahomes.com.au)

P: 0435081699