



3 2 2

LOT 4360 Gleam Street (Riverwalk Estate) WERRIBEE VIC 3030

Land Size: 262 m² House Size: 165 m²

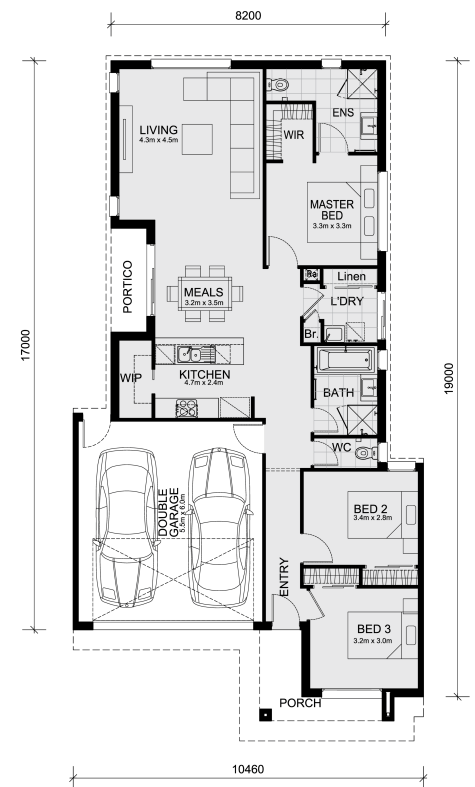
The Turn Key Longwood 177 House and Land Package!

* Mimosa Homes New Added Value Inclusions:

- Inclusive of site costs & connections with H1 class slab as per standard inclusions!
- 50-year Structural Warranty!
- 2590mm Ceiling Height
- LED Downlights to Entire Home!
- Flyscreens to all openable windows
- Quality floor coverings throughout entire home!
- Double Glazed Awning windows!
- 600mm Induction Cooktop
- Reverse Cycle Air Conditioning!
- 7 star energy!
- Pre Priced upgrades and more!
- Turn Key package: Front Landscaping, Concreting to driveway and porch, Letterbox & Clothesline, Blinds to all windows inc sliding door!

CALL BUILDER DIRECT!

All plans and facades are indicative only and may change. Mimosa Homes may amend plans, specifications, and prices without notice. Package prices are based on a standard facade, standard inclusions, and suitable land availability, excluding developer/estate requirements. Facade and inclusion images may show non-standard items n...



\$594,512

Senada Klempic

E: senada@mimosahomes.com.au

P: 0411403640