



3 2 2

LOT 4361 Gleam Street (Riverwalk Estate) WERRIBEE VIC 3030

Land Size: 262 m² House Size: 165 m²

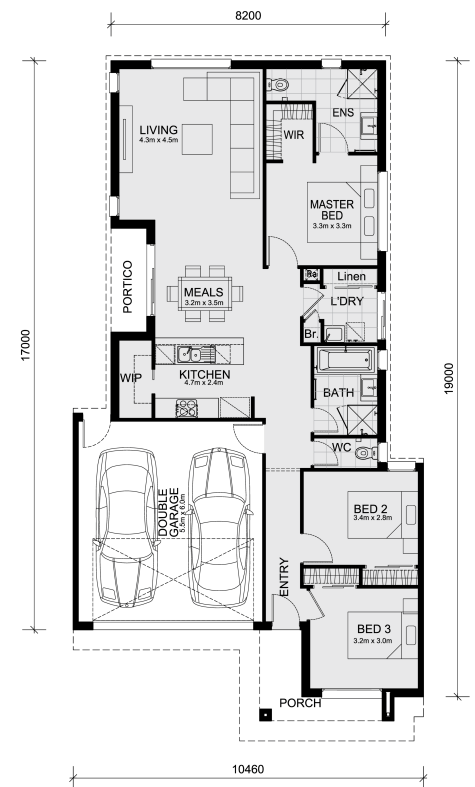
The Longwood 177 Turn Key House and Land Package!

* Mimosa Homes New Added Value Inclusions:

- Inclusive of site costs & connections with H1 class slab as per standard inclusions!
- 50-year Structural Warranty!
- Quality floor coverings throughout entire home!
- Double Glazed Awning windows!
- 600mm induction cooktop!
- Reverse cycle air conditioning
- Water Heat Pump!
- Stainless steel Dishwasher
- 7 star energy!
- Turnkey: Front Landscaping, Concreting to Driveway & Porch, Letter Box, Clothesline and Blinds!
- Pre Priced upgrades and more!

CALL BUILDER DIRECT! 0411 403 640

All plans and facades are indicative only and may change. Mimosa Homes may amend plans, specifications, and prices without notice. Package prices are based on a standard facade, standard inclusions, and suitable land availability, excluding developer/estate requirements. Facade and inclusion images may show non-standard items not included in the price. Dimensions are approximate. Landscaping, fencing, ...



\$590,081

Senada Klempic

E: senada@mimosahomes.com.au

P: 0411403640