



4 2 2

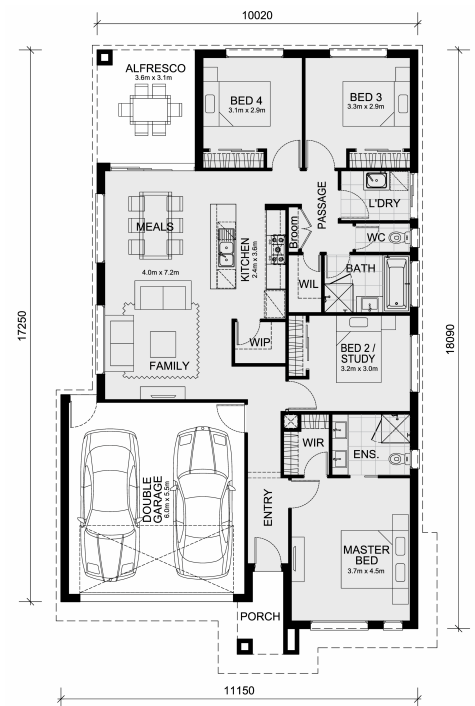
## Lot 4364 Riverwalk Estate WERRIBEE VIC 3030

**Land Size: 392 m<sup>2</sup> House Size: 186 m<sup>2</sup>**

- Inclusive of site costs & connections with H1 class slab as per standard inclusions!
- 50-year Structural Warranty!
- Quality floor coverings throughout entire home!
- Higher ceilings 2550mm to ground floor!
- Double Glazed Awning windows!
- LED Downlights to entire home!
- Fibre Optic Provision!
- Vitrified Compact Surface benchtop to kitchen, bathroom & ensuite!
- 900mm S/S upright oven and cook top with S/S canopy rangehood!
- Stainless steel Dishwasher and Microwave with trim kit!
- Overhead cupboards to kitchen (Design specific)
- Quick slider doors to robes!
- 2000mm High framed shower screen to ensuite & bathroom!
- 800mm wide laminate double door cabinet to laundry!
- Semi-floating vanity cabinet to ensuite, bathroom & WC (Design specific)
- Remote control panel sectional lift garage door!
- Fibreglass mesh flyscreens to all openable windows!
- 7 star energy!
- Flexible floor plans & so much more!

CALL BUILDER DIRECT!

All plans and facades are indicative...



# \$671000

**Vikas Khurana**

E: [vikas@mimosahomes.com.au](mailto:vikas@mimosahomes.com.au)

P: 0468629991