



Julia (Locksley 131) 8.5m

\$522,784

Lot 4737 Davish Court - Smiths Lane Clyde North 3978 VIC



3



2



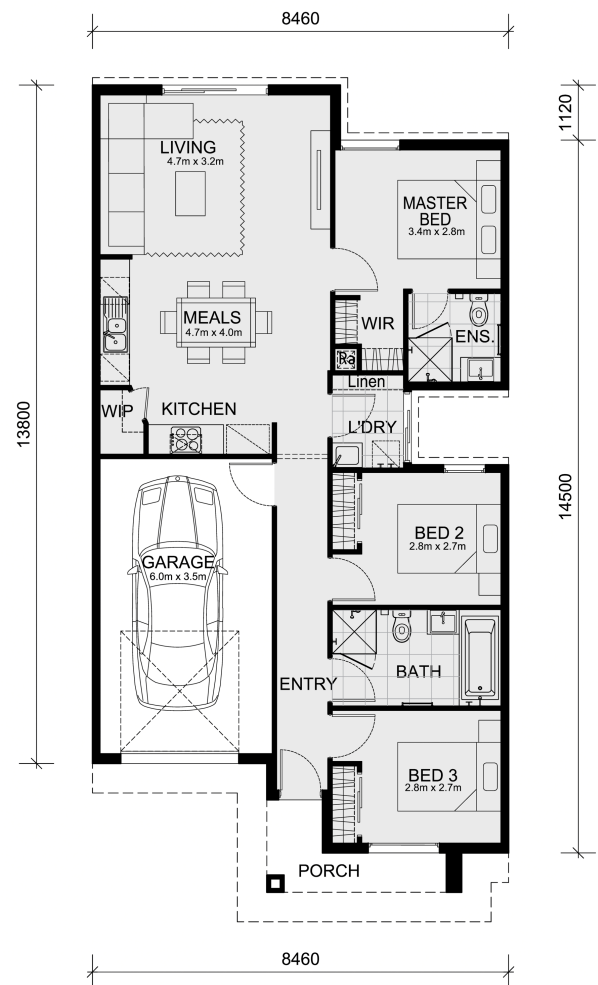
1

Mimosa Homes Proudly Presents the Julia (Locksley 131) 8.5m

To inquire, contact Adam on 0439 779 909

The Locksley 131 Home and 179 sqm of land facing east are in Smiths Lane, Clyde North.

- Fixed site costs—only \$3,500 (limited-time offer)
- 7-Star energy rating with 2 Split Systems for Heating & Cooling
- Electric Hot Water with Heat Pump
- Induction Cooktop, modern oven, and rangehood
- 3 Phase Power and electrical infrastructure readiness (All-Electric)
- Stone benchtops in the kitchen
- Overhead cupboards to the kitchen & above the fridge
- Soft-close drawer & cupboards and Pot Drawers
- Floor coverings throughout: laminate, carpet, and tiles
- LED Downlights throughout, 2 Paraflood Lights & 2 Facade Feature Lights
- Fiber optic provision with TV points and Data points
- Recessed tile shower bases throughout
- Towel and toilet roll holders
- Blinds throughout
- Internal garage access door
- 2 remote controls + 1 wall-mounted control for the garage
- Front Landscaping, Letterbox, and Clothesline
- Color thru concrete Driveway
- Termite Protection:
 - Part A: All slab penetrations
 - Part B: External perimeter with Home Guard Blue barrier
- Included in Pricing (if applicable)
- BAL 12.5 bush...



Area Details

Land Size: 179 sqm
Building Size: 122 sqm

Contact: Adam Keleher
Phone: 0439 779 909
adamk@mimosahomes.com.au

www.mimosahomes.com.au