



4 2 2

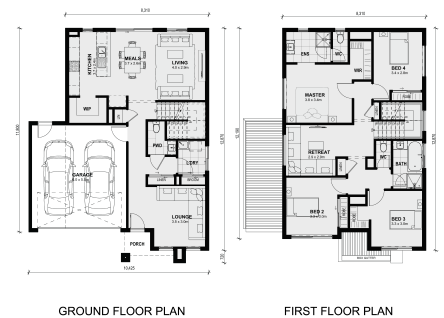
Lot 4951 Meridian Estate CLYDE NORTH VIC 3978

Land Size:

House Size: 222 m²

Dedicated to rest and relaxation the Epsom features four bedrooms all located on the first floor and is accompanied by a retreat and shared bathroom. On the ground floor, the highlight is the large open kitchen, meals and dining area that also has a large walk-in wardrobe, powder room, walk-in linen and a separate front lounge as the perfect sanctuary.

...



GROUND FLOOR PLAN

FIRST FLOOR PLAN

\$768,000

Raj Singh

E: rajinder@mimosahomes.com.au

P: 0430172269